

PRESENTED BY:

TULSAHBA.COM \$1



YOUR HOME.
OUR PROFESSION.

PARADE *of* HOMES

JUNE 13-21, 2026
HOMES OPEN 1-7 PM DAILY
FREE ADMISSION

FEATURED SUBDIVISIONS:

Forest Ridge • Stone Canyon • The Reserve at Southern Woods
Pine Ridge • The Fountains • The Reserve at Cedar Ridge



Why Own at Autobahn



Genuine Ownership

Each unit comes with a deed and title, granting you the full benefits of commercial real estate ownership.

Control Your Investment

Keep it, rent it, customize it, or sell it — you own it outright.

1031 Exchange Opportunity

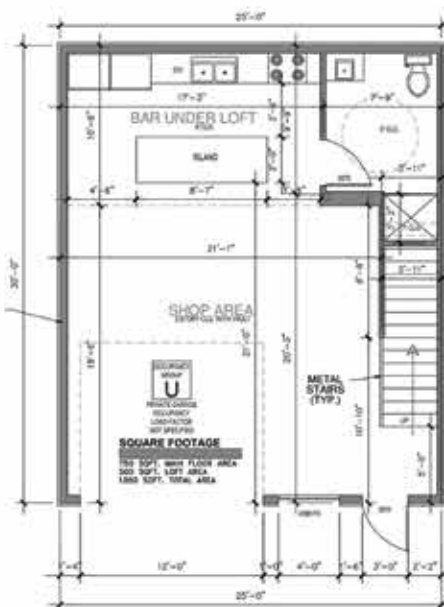
Use your Autobahn purchase as a 1031 exchange asset, allowing you to roll proceeds from another sale into a tangible, appreciating investment.

Site Features

- Prime South Tulsa / Bixby location — at 126th & Memorial Drive
- 24/7 gated access with security monitoring
- Ample drive space and parking for easy maneuverability
- Professionally managed property

Unit Features

- 29-foot clear ceiling heights for exceptional space and ventilation
- 14' tall x 12' wide overhead doors — perfect for large vehicles and RVs
- 3-foot walk-in pedestrian door for easy access
- 150+ amp electrical service for heavy-duty tools and lighting
- Rooftop HVAC individual mini split system for year-round comfort
- Water and sewer connections included
- Customizable and combinable units — make it your dream shop
- Zoned Commercial (not for residential use)



Located at 7555 E 126th St, Bixby, OK
126th and Memorial
Steve Wright | 918-951-6186



re·al·tor

n.

An adventurer and strategic bridge between where you are and where you belong; a caffinated negotiator who turns "open houses" into "closed deals". Brings clarity to chaos. *See Alicia Parker.*



THE PARKER TEAM



COLDWELL BANKER
SELECT REAL ESTATE

RANKED TOP-SELLING TEAM IN SOUTH TULSA
TOP 500 REAL ESTATE AGENTS - REAL PRODUCERS



918 231-5995

PARKERTEAMTULSA.COM





LifeStyles

Lighting Hardware Furniture

Tulsa (918) 362-3000
7222 S. Mingo Road, just south of 71st Street

Edmond (405) 348-7420
1801 West 33rd Street, between Kelly and Santa Fe

www.LifeStylesStores.com





Sheffield

REALTY

The Brokerage Built on
New Construction Experience

1,100+ New Construction Homes Sold



HOME + you

buy, build, remodel
with the one you trust



Quick and easy application
at TinkerFCU.org/home-loans

TFCU
Tinker Federal Credit Union

Federally insured by NCUA
NMLS 490973



TULSA'S LEADING CUSTOM HOME BUILDERS



Three Premier Builders. One Extraordinary Standard.

Abbey Homes • Cobblestone Homes • True North Homes

Together, we represent the height of luxury custom homebuilding in the greater Tulsa area. Backed by 48 years of combined experience and a seamlessly integrated team, we provide a building experience defined by precision, sophistication, and personal attention.

This is custom homebuilding — elevated.

Contact Us

FOR YOUR CUSTOM HOME BUILD

+1 (918) 200-9780 SALES@TNHOK.COM

Now Building:

Bixby

The Reserve at Cedar Ridge
The Fountains
Whisper Lane

Broken Arrow

Stone Bluff at Forest Ridge
Artesia at Forest Ridge
Creekside Villas at Forest Ridge

Midtown Tulsa

Jenks

The Reserve at Southern Woods
Stone Bluff on Holley

Owasso

The Coves at Stone Canyon
The Bluffs at Stone Canyon

We custom build on your land!

WELCOME TO THE 2026 HBA GREATER TULSA SPRING PARADE OF HOMES



Tim Martin

Presented by the Home Builders Association of Greater Tulsa, the Greater Tulsa Parade of Homes showcases more than 100 new homes throughout the Tulsa metro area. Attendees can explore the latest home trends, visit a wide range of neighborhoods, and speak directly with the builders behind each home.

This year's parade features homes priced from \$250,000 to over \$1,500,000 across nearly every community in the Tulsa area. Homes are open daily from 1 p.m. to 7 p.m., making it easy to plan your route using the maps in this guide or the mobile app.

The parade offers a convenient, no-cost opportunity to tour beautiful new homes, discover different styles and communities, and connect with local builders.

Beat the heat and experience the Parade of Homes Twilight Tour Nights in some of the featured subdivisions offering extended weekday evening hours from 6 p.m. to 9 p.m. At four featured locations, attendees can enjoy special activities and refreshments, making these stops a must-see during your parade tour.

Here are the four Twilight Tour nights:

Pine Ridge – Monday, June 15

Forest Ridge – Tuesday, June 16

The Reserve at Southern Woods – Thursday, June 18

Stone Canyon – Friday, June 19

We extend our sincere thanks to our Platinum Sponsors, Arvest Bank, and Mill Creek Carpet & Tile, along with the many sponsors, committee members, builders, developers, and members who make this event possible. Most importantly, thank you to our attendees for joining us and supporting the Greater Tulsa Parade of Homes.

Tim Martin

President

Jeffrey Smith

Executive Vice President/CEO



Jeffrey Smith



Copyright 2026

Home Builders Association of Greater Tulsa

The content in this publication was produced by and is exclusively owned by the Home Builders Association of Greater Tulsa for the 2026 Greater Tulsa Parade of Homes. The material in this guide is not to be reprinted or reproduced in any form without prior consent.

The Home Builders Association of Greater Tulsa is a not-for-profit, professional trade organization with more than 1,000 members that advocates for the residential housing and remodeling industry in communities in and around Tulsa. Professional members must meet stringent requirements, such as providing customer and professional references, insurance certification, and adhering to a strict code of ethics. For more information, visit TulsaHBA.com.

11545 East 43rd Street, Tulsa, OK 74146

(918) 663-5820

2026 GREATER TULSA PARADE OF HOMES COMMITTEE

Jesse Powell, Chair

Dana Bowen

Beth Byrd

Alan Cook

Connell Curran

Chris Hodges

Casey Mathis

Nikki Pauly

Mark Priess

Anastasia Smith

Cahn Wiggs



For the past 45 years, Dodson Building Group has built a solid reputation by providing exceptional homes at an outstanding value.

Located in Pine Valley Reserve
and Shadow Trails II



CONTACT

Rick Dodson

Cell: 918-638-3003

Fax: 918-417-7825

Email: Dodsonbuilding@cox.net

Kevin Schultz

Cell: 918-520-4814

Fax: 918-417-7825

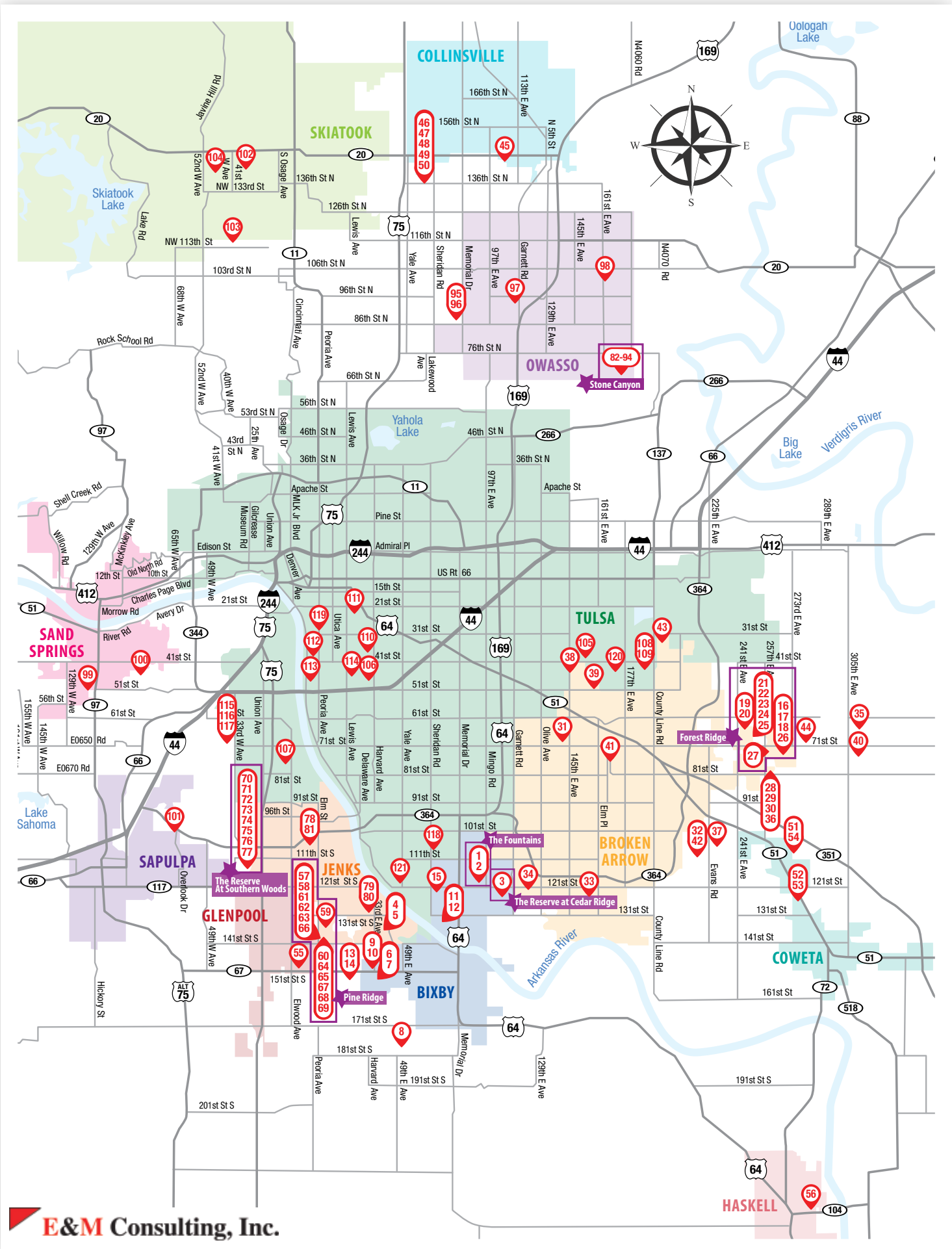
Email: Schultzbuilding@gmail.com

www.dodsonbuilding.com

OVERVIEW MAP INDEX

Homes by Price

E&M will generate closer to print



TWILIGHT TOURS



6 PM - 9 PM

MONDAY, JUNE 15

TUESDAY, JUNE 16

PINE RIDGE 


FOREST RIDGE

THURSDAY, JUNE 18

FRIDAY, JUNE 19

the Reserve
AT SOUTHERN WOODS

Stone Canyon
Rediscover Nature. Redefine Home.

Sponsored by:





A Big **THANKS**
To Our *Amazing* SPONSORS

2026 PLATINUM SPONSORS



TWILIGHT TOUR SPONSORS



OFFICIAL PARADE APP SPONSOR



HBA COMMUNICATIONS SPONSOR



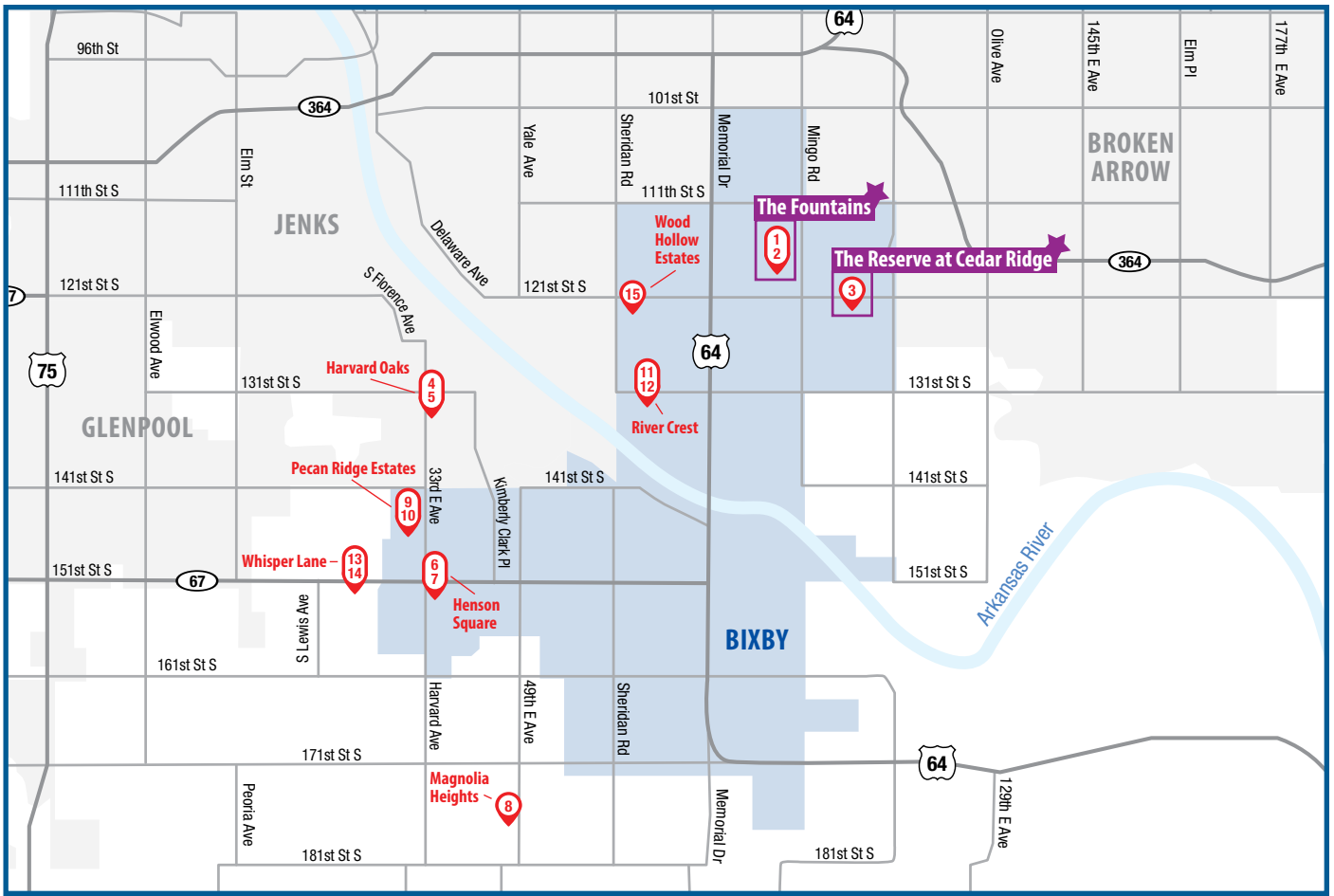
PARADE OFFICIAL MOVING SPONSOR



TWO MEN AND A TRUCK.
"Movers Who Care."

OFFICIAL TRANSPORTATION SPONSORS





COMMITTED TO GETTING YOUR JOB DONE. EASIER

When your success depends on reliable timelines and top-quality materials, contractors like you turn to ABC Supply. With contractor-first support, 24/7 ordering through myABCsupply, a nationwide footprint, and a best-in-class delivery fleet, we help ensure your projects are completed on time, every time.

**7333 E 38th St
Tulsa, OK
918-627-9348**

**4345 S 93rd East Ave
Tulsa, OK
918-270-1788**

Roofing | Siding | Windows & Doors | Tools | Accessories



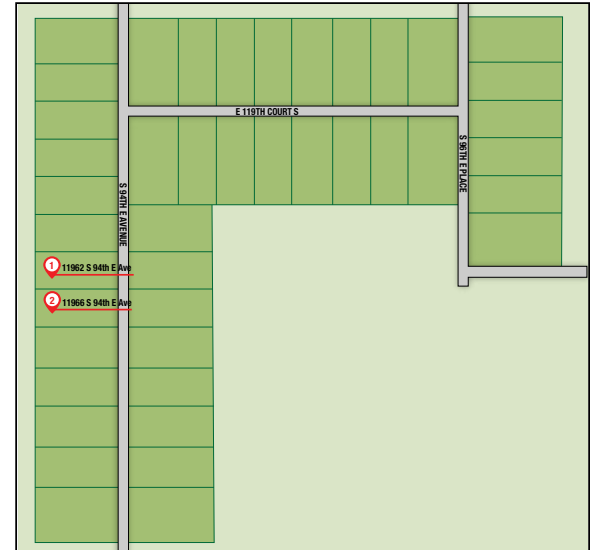
THE FOUNTAINS



The Fountains

NW corner of 121st Street and Mingo Road • Bixby Schools
 From 121st Street & Mingo Road, head North for 0.1 mile.
 Destination: West of 121st Street.

Designed for effortless living without compromise, this luxury downsizing community offers an elevated take on single-story living. Featuring beautifully crafted homes exclusively on one level, the neighborhood blends sophistication with simplicity in a stunning, thoughtfully planned setting. Residents enjoy scenic pond views with elegant fountain features, while winding walking trails connect seamlessly to the Bixby Bike Trail System—perfect for enjoying the outdoors just steps from home. Privately gated and designed for a true lock-and-leave lifestyle, lawn maintenance is included, allowing for low-maintenance living year-round. Built by premier custom home builders, the community already boasts a collection of beautifully completed homes, with additional move-in ready opportunities available, as well as select homesites for those looking to design and build a personalized dream home.



Sooner Development Group

(918) 640-7252 | <https://tnhok.com> | sales@tnhok.com

Price Range: \$575,000–\$750,000

Average Square Footage: 2,400 sq. ft.

Lot Size: 0.15 acres



OKLAHOMA CAPITAL BANK

Oklahoma Capital Bank. Your *DREAM* home construction specialists!

Looking to build your dream home?
 With Oklahoma Capital Bank handling your construction loan, you can expect white glove service. Our loan officers will answer your calls personally and be ready to answer any questions you have. We won't let building your dream home turn into a nightmare!

Alyn Williams
 VP & Commercial Loan Officer
awilliams@ocb.bank
 918-998-0976

Oklahoma Capital Bank
www.ocb.bank
 918-998-0990



THE FOUNTAINS | 11962 South 94th East Avenue | Bixby Schools

1



2 **3** **2,493** **0.15**
BED **BATH** **SQ FT** **LOT SIZE** **\$596,000**



VENDORS

Furnishings and AccentsJ Event and Design
 Interior Designer/DecoratorConnell Curran |
 True North Homes Design Team
 LandscapingJeff Bier of ART Designs, LLC
 Available



CONTACT BUILDER

True North Homes LLC
 (918) 640-7252
 gant@tnhok.com

THE FOUNTAINS | 11966 South 94th East Avenue | Bixby Schools

2



3 **2** **2,404** **0.15**
BED **BATH** **SQ FT** **LOT SIZE** **\$579,500**



VENDORS

Furnishings and AccentsJ Event and Design
 Interior Designer/DecoratorConnell Curran |
 True North Homes Design Team
 LandscapingJeff Bier of ART Designs, LLC
 Available



CONTACT BUILDER

True North Homes LLC
 (918) 640-7252
 gant@tnhok.com

THE RESERVE AT CEDAR RIDGE

121st Street and Mingo Road • Bixby Schools
 Head east on East 121st Street South from Mingo Road. Continue straight for about 0.5–0.6 miles. The coordinates 35.988288, -95.858639 will be along East 121st Street South, before you reach Garnett Road. Destination: East of Mingo, between Mingo Road and Garnett Road.

THE RESERVE AT Cedar Ridge

An extremely sought-after community, this gated enclave showcases luxury new construction defined by architectural excellence and elevated design. From the moment you arrive, the grand entrance—complete with striking water features and curated lighting—sets the tone for what lies beyond. Homes are thoughtfully positioned on spacious half-acre+ homesites, creating a sense of privacy while maintaining a cohesive, high-end aesthetic throughout the neighborhood. A serene setting anchors the community, highlighted by a large pond with a signature fountain feature, offering both beauty and tranquility. Every detail, from the streetscape to the individual elevations, reflects a commitment to craftsmanship, sophistication, and timeless design.

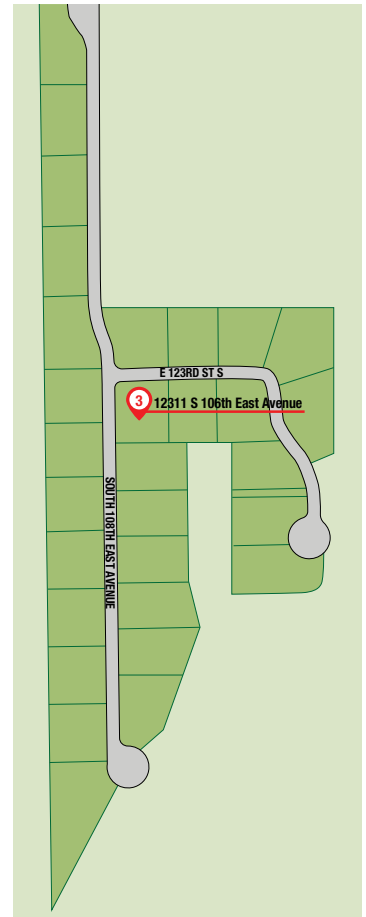
Sooner Development Group

(918) 845-1682 | <https://tnhok.com> | sales@tnhok.com

Price Range: \$1,000,000+

Average Square Footage: 4,000–5,500 sq. ft.

Lot Size: 0.5 acres



FIND YOUR DREAM HOME

on the Tulsa Parade of Homes App & Website



online at:
tulsaparadeofhomes.com

or download the app:



get it now



THE RESERVE AT CEDAR RIDGE | 12311 South 106th East Avenue | Bixby Schools

3



4 **4.5** **5,300** **0.56**
BED **BATH** **SQ FT** **LOT SIZE** **\$1,699,000**



VENDORS

Interior Designer/Decorator.....Abbey Homes Design Team
 Architect or Plan Designer.....JEFF BIER/ART DESIGNS, LLC
 Available | Under Construction



CONTACT BUILDER

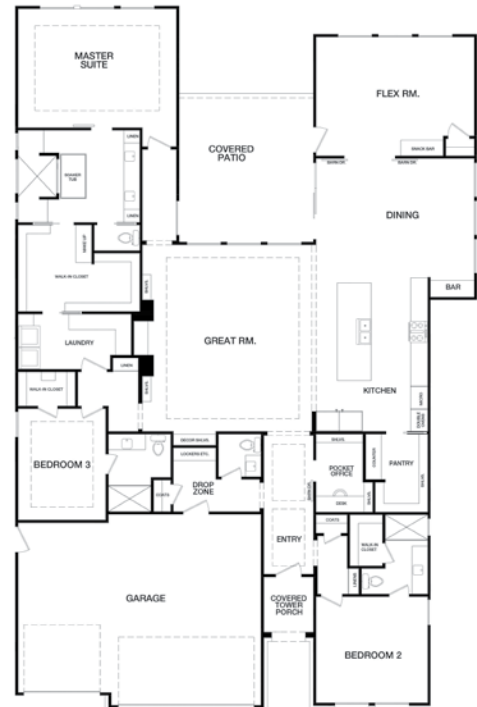
Abbey Homes, LLC
 (918) 640-7252
 abbeyhomesllc@gmail.com

HARVARD OAKS | 2335 East 135th Drive | Bixby Schools Schools

4



3 **3 1/2** **3,070** **8,450**
BED **BATH** **SQ FT** **LOT SIZE** **\$629,900**



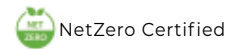
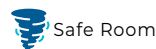
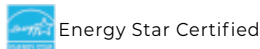
VENDORS

Architect
 or Plan Designer.....Creative Home Design and Castlerock Builders
 Landscaping.....Cityscape



CONTACT BUILDER

Castlerock Builders
 (918) 951-6186
 castlerock1@cox.net





4 BED **3** BATH **3,450** SQ FT **8,450** LOT SIZE **\$664,900**



VENDORS

Architect Creative Home Design and Castlerock Builders
 Landscaping Cityscape



CONTACT BUILDER

Castlerock Builders
 (918) 951-6186
 castlerock1@cox.net



4 BED **3** BATH **2,350** SQ FT **7,281** LOT SIZE **\$411,000–\$421,000**



Maxwell



CONTACT BUILDER

Simmons Homes, LLC
 (918) 205-0535
 info@simmonshomes.com

Choose the #1 Generac dealer in Oklahoma



GET PEACE OF MIND WITH GENERATOR SUPERCENTER

- *As low as \$149/month*
- *Turnkey installation*
- *Certified electricians & plumbers*
- *Permitting when required*
- *Maintenance & service after install*

855-996-9707

Call today for a free estimate on a
Generac whole home generator.

8202 E 41st, Tulsa, OK 74145
GeneratorSupercenterofTulsa.com



**Scan today for your
free in home
consultation**



3 BED **2** BATH **1,535** SQ FT **5,624** LOT SIZE **\$352,500**



Phoenix



CONTACT BUILDER

Simmons Homes, LLC
(918) 205-0535
info@simmonshomes.com



3 BED **3.5** BATH **2,945** SQ FT **30,000** LOT SIZE **\$599,900**



Hickory



CONTACT BUILDER

Envision Homes LLC
(918) 260-7841
mike.parks1@cox.net

PECAN RIDGE ESTATES | 3229 East 147th Place South | Bixby Schools

9



4
BED

3
BATH

2,183
SQ FT

13,008
LOT SIZE

\$427,500–
\$437,500



Dawson



CONTACT BUILDER

Simmons Homes, LLC
(918) 205-0535
info@simmonshomes.com

PECAN RIDGE ESTATES | 3234 East 147th Place South | Bixby Schools

10



4
BED

3
BATH

2,276
SQ FT

10,352
LOT SIZE

\$486,500



Bailey



CONTACT BUILDER

Simmons Homes, LLC
(918) 205-0535
info@simmonshomes.com

RIVER CREST | 7162 East 131st Court South | Bixby Schools

11



4 BED 2.5 BATH 2,068 SQ FT 8,039 LOT SIZE \$370,700-\$380,700



Beckett



CONTACT BUILDER

Simmons Homes, LLC (918) 205-0535 info@simmonshomes.com

RIVER CREST | 13316 South 72nd East Avenue | Bixby Schools

12



4 BED 2 BATH 1,801 SQ FT 7,844 LOT SIZE \$395,100



Owen



CONTACT BUILDER

Simmons Homes, LLC (918) 205-0535 info@simmonshomes.com

HM HARDSCAPE MATERIALS

Ten Acres of pure Landscape Possibilities.

Stone. Gravel. Garden. Pond. Fish.

Started in 1993 with a truck and a wheelbarrow, Hardscape Materials is now Oklahoma's premier stone and outdoor living headquarters. From boulders and building stone to water features, ponds, plants, and décor, this is where great outdoor landscapes begin.



Quality Hardscape Materials

- ✓ Exceptional Customer Service
- ✓ Locally Owned & Easy to Access
- ✓ Certified Scales for Accurate Weight
- ✓ Massive Stone Sample & Display Panels
- ✓ Artificial On-Site Turf Options
- ✓ Same Day Delivery For Home Builders
- ✓ Over 10 Acres of IN-Stock Materials!

Built for Builders, Easy for Home Owners.

Hardscape Materials delivers accuracy, efficiency, and convenience—all in one place.

Everything Outside. One Stop, One Scale.

From a massive selection of stone and gravel to our on-site certified scale, Hardscape Materials makes it easy to source, load, and accurately measure materials without running all over town.

 HardscapeMaterials.com



Pump Shack



Garden Center



Outdoor Living




PARADE
of **HOMES**

 **918.369.1170**

 11610 S. Memorial Drive. Bixby, OK 74008



Luxury Living Starts with a Strong Connection



Bixby's #1 Choice for Home Internet

Experience the ultimate in luxury living with BTC Broadband! Our lightning-fast high-speed internet flawlessly integrates into luxury homes, providing seamless connectivity for all your smart home needs.

- ✓ **Whole-Home Connectivity for a Smart Lifestyle**
- ✓ **Reliable, High-Speed Wi-Fi Performance**
- ✓ **Premium Technical Support & Peace of Mind**

UNLIMITED DATA & WI-FI INCLUDED

OUTPERFORMS 5G CELLULAR & SATELLITE*

BTC Fiber is proud to be in the following Parade Neighborhoods:

- Elysian Fields
- Frazier Meadows
- Magnolia Heights
- Scissortail
- The Reserve at Cedar Ridge
- Whisper Lane
- Wind River
- Wood Hollow Estates
- Harvard Oaks
- The Fountains
- River Crest

Proud Communications Sponsor of the 2026 Tulsa Area Parade of Homes

Connect Your Dream Home Today
(918) 366-8000



Scan the QR code to learn more about current internet promotions!

WHISPER LANE | 15227 South 27th East Avenue | Bixby Schools

13



5 BED **4** BATH **4,290** SQ FT **1.04** LOT SIZE **\$1,299,000**



VENDORS

Furnishings and Accents Susan Eddings Perez Staging
 Interior Designer/Decorator Connell Curran | Abbey Homes Design Team
 Architect or Plan Designer JEFF BIER/ART DESIGNS, LLC
 Landscaping J&J Landscaping Available



CONTACT BUILDER

Abbey Homes, LLC
 (918) 640-7252
 abbeyhomesllc@gmail.com

WHISPER LANE | 15228 South 27th East Avenue | Bixby Schools

14



5 BED **5** BATH **4,387** SQ FT **1.05** LOT SIZE **\$1,350,000**



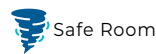
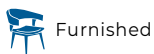
VENDORS

Furnishings and Accents LUXE
 Interior Designer/Decorator Connell Curran | True North Homes Design Team
 Architect or Plan Designer Jeff Bier of ART Designs, LLC
 Landscaping J&J Landscaping Available



CONTACT BUILDER

True North Homes LLC
 (918) 640-7252
 gant@tnhok.com





3 BED **4** BATH **4,518** SQ FT **14,349** LOT SIZE **\$1,124,000**



VENDORS

Furnishings and Accents SEP Staging
 Interior Designer/Decorator Rose Ann Farabough
 Landscaping Joe Martin



CONTACT BUILDER

Perfection Homes
 (918) 810-0318
 perfection.wda@gmail.com

BA Lawns & Landscaping
 DREAM • DESIGN • BUILD

Your Outdoor Experts

- LANDSCAPING • HARDSCAPES • OUTDOOR LIVING
- OUTDOOR KITCHENS • POOLS • WATER FEATURES • IRRIGATION

Tulsa & Surrounding Areas
 www.BALandscaping • 918-261-9234

EMPIRE TITLE & CLOSING

Experience Empire!

- Title & Escrow Services
- Earnest Money E-Delivery
- Online Closing Cost Calculator
- Bilingual Staff & Closings
- Energetic and Welcoming Atmosphere
- Social Media Presence

918-600-0650 | 1401 N Aspen Ave., Broken Arrow OK | 918-708-9400 | 116 S 1st St., Suite B., Jenks OK

Follow Us on Social Media @empiretitleok

BOHAN
 sight & sound

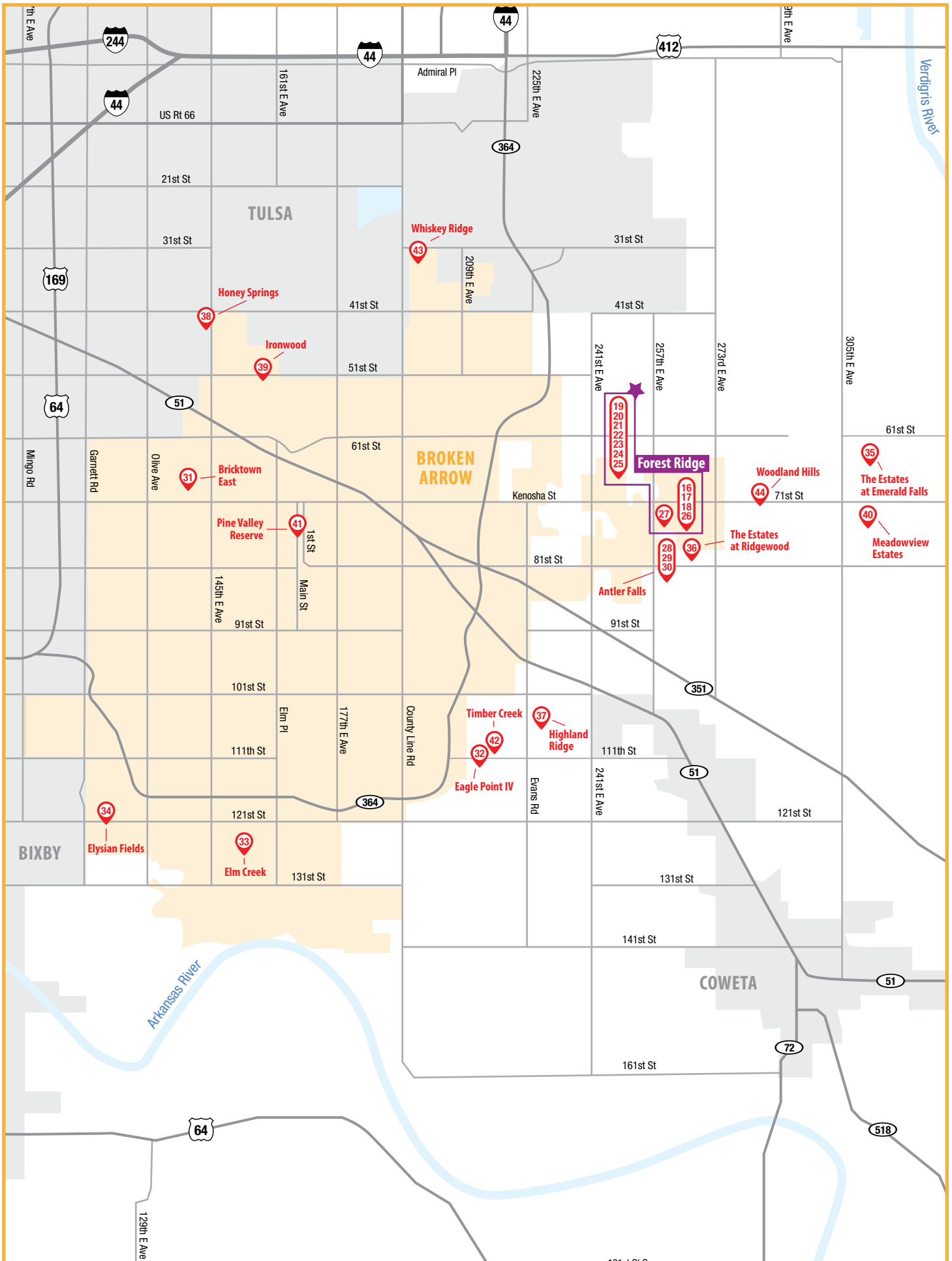
CUSTOM AUDIO/VIDEO INSTALLATION

www.bohansightandsound.com 918-857-2117
 tab@bohansightandsound.com

JUNIPER HOME GROUP

We're your partner in creating a home that reflects your story, built on a foundation of trust, craftsmanship and genuine care for our community.

www.jhghomes.com | trevor@jhghomes.com | 918-798-2544



FOREST RIDGE



East Kenosha Street and Creek Turnpike • Broken Arrow Schools

From the Creek Turnpike, exit Kenosha Street. Head east 2.5 miles, and the main entry will be on the right-hand side. Turn right on Forest Ridge Boulevard.

Forest Ridge is a resort-style master-planned community that captures the best of Broken Arrow—a welcoming lifestyle, with modern amenities and beautiful homes from top homebuilders. Residents enjoy abundant green spaces, community parks, tranquil lakes, and 10 miles of nature trails perfect for walking and biking.

At the heart of the community is The Club at Forest Ridge, featuring an 18-hole golf course, a resort-style pool, a fitness center, and an indoor/outdoor racquet facility.

Artesia



Artesia epitomizes an exclusive and tranquil lifestyle. This gated community, nestled between 71st and 81st Street off Midway Road, offers homes priced around \$1.2 million. Enveloped by lush greenery, peaceful water features, and golf course views, Artesia seamlessly combines security with natural beauty. Residents enjoy the luxury of privacy within this upscale enclave.

Price Range: \$1,200,000+
Average Square Footage: 4,000+ SQ. ft.
Lot Size: 0.5 acres

Artesia Estates

Welcome to Forest Ridge's most exclusive neighborhood. This gated golf course island behind Artesia features just five estate-sized lots—each with its own private gate and stunning golf course views.

Price Range: \$2,000,000+
Average Square Footage: 5,000+ SQ. ft.
Lot Size: 1 acre

Creekside



Creekside exudes a serene and family-friendly personality within the Forest Ridge master-planned community. This charming neighborhood seamlessly blends the beauty of its natural surroundings with convenient access to shopping, dining, and esteemed Broken Arrow schools. Creekside embodies a harmonious balance between urban convenience and serene living.

Price Range: \$450K+
Square Footage: 2,000 SQ. ft.
Lot Size: 0.2 acres

Creekside Villas



Creekside Villas caters to an exclusive 55+ community within a gated neighborhood. With a private clubhouse, dog park, and single-story homes ranging from 1,500 to 2,500 square feet, it offers luxury downsizing for discerning residents. Home prices start around \$500k, and with lawn care included in HOA dues, the community provides a hassle-free lifestyle. Enjoy the added amenity of a putting green, making Creekside Villas a delightful haven for those seeking upscale, low-maintenance living.

Price Range: \$500K+
Average Square Footage: 1,500+ SQ. ft.
Lot Size: 0.14 acres

Stone Bluff

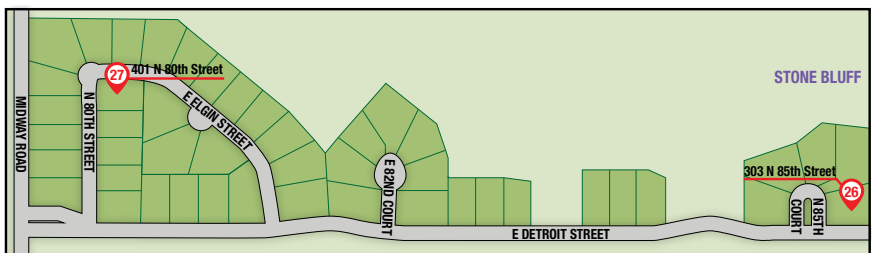
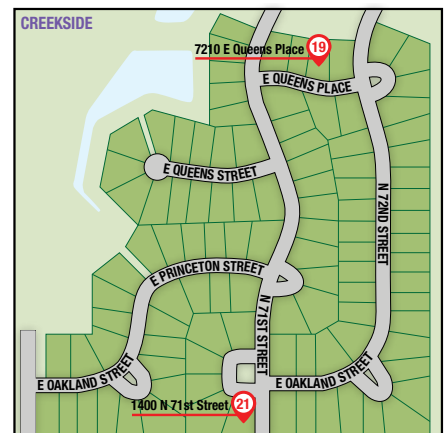
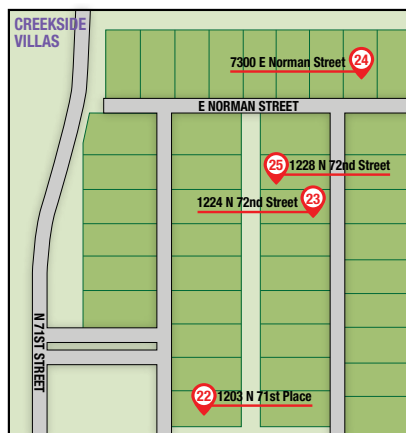
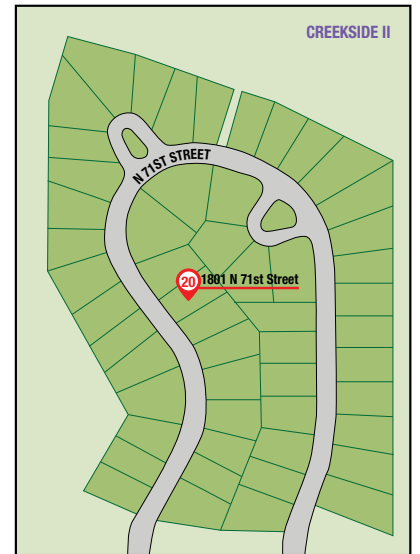
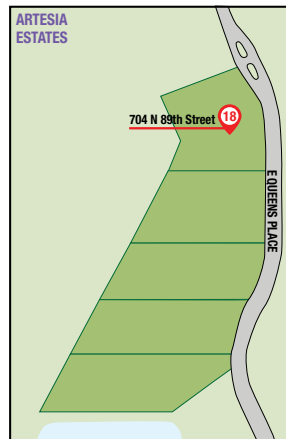
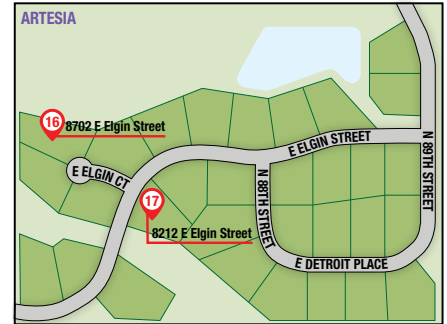


Stone Bluff welcomes you to build your forever home in a picturesque neighborhood with stunning elevated views of the golf course. It's the perfect place to put down roots and enjoy all that Forest Ridge has to offer.

Price Range: \$750,000+
Average Square Footage: 3,000+ SQ. ft.
Lot Size: 0.25 acres

The RobsonCompanies Inc.

(918) 357-2787
 www.forestridge.com
 info@forestridge.com



FOREST RIDGE - ARTESIA | 8702 East Elgin Street | Broken Arrow Schools

16



4 BED **4** BATH **4,200** SQ FT **0.63** LOT SIZE **\$1,470,455**



VENDORS

Interior Designer/Decorator.....Chelsea Wilson of Harper House Collective x Abbey Homes
 Architect or Plan Designer.....JEFF BIER/ART DESIGNS, LLC
 Landscaping.....J&J Landscaping Sold



CONTACT BUILDER

Abbey Homes, LLC
 (918) 640-7252
 abbeyhomesllc@gmail.com

FOREST RIDGE - ARTESIA | 8801 East Elgin Street | Broken Arrow Schools

17



4 BED **5** BATH **5,200** SQ FT **0.65** LOT SIZE **\$1,650,000**



VENDORS

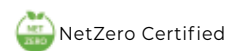
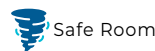
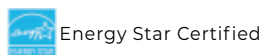
Interior Designer/Decorator.....Tabatha and Ryan Farabough
 Architect or Plan Designer.....Creative Home Designs



CONTACT BUILDER

Farabough Homes, LLC
 (918) 402-3447
 faraboughhomes@gmail.com

Artesia 3





4 BED **5** BATH **7,500+** SQ FT **1.01** LOT SIZE **\$3,123,456.78**



704 North 89th Street

VENDORS

Interior Designer/DecoratorSusan Eddings Perez Staging
 Architect or Plan Designer.....Connell Curran | Abbey Homes Design Team
 Architect or Plan Designer.....Jeff Bier of ART Designs, LLC
 LandscapingJ&J Landscaping
 Sold



CONTACT BUILDER

Abbey Homes, LLC
 (918) 640-7252
 abbeyhomesllc@gmail.com



3 BED **2.5** BATH **2,331** SQ FT **0.18** LOT SIZE **\$474,900**



London



CONTACT BUILDER

Beacon Homes
 (405) 407-1205
 brandy@mybeaconhome.com

FOREST RIDGE - CREEKSIDE II | 1801 North 71st Street | Broken Arrow Schools

20



3 BED **2.5** BATH **2,449** SQ FT **0.186** LOT SIZE **\$529,000**



VENDORS

Interior Designer/Decorator Jessica Mitchell
 Architect or Plan Designer Designs by Shelly



CONTACT BUILDER

Butler Homes LLC
 (918) 344-6808
 contactus@butlerhomesllc.com

Aspen

FOREST RIDGE - CREEKSIDE | 1400 North 71st Street | Broken Arrow Schools

21



5 BED **3F | 2H** BATH **3,850** SQ FT **0.235** LOT SIZE **\$669,900**



VENDORS

Furnishings and Accents Jessica Mitchell
 Interior Designer/Decorator Jessica Mitchell
 Architect or Plan Designer Designs by Shelly



CONTACT BUILDER

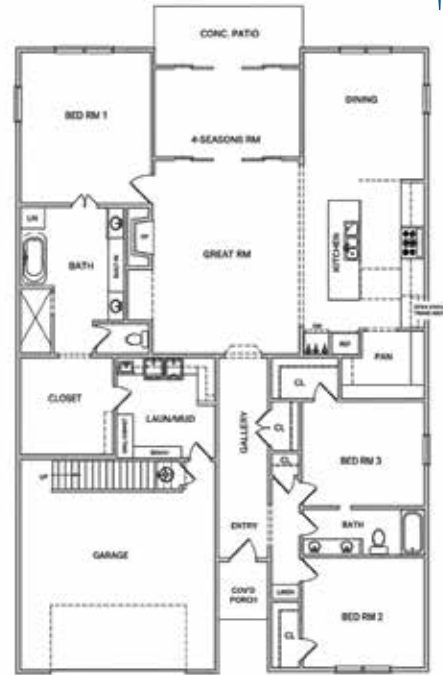
Butler Homes LLC
 (918) 344-6808
 contactus@butlerhomesllc.com

Aspen 3





3 BED **2** BATH **2,369** SQ FT **0.334** LOT SIZE **\$572,000**



VENDORS

Furnishings and AccentsJ Event and Design
 Interior Designer/Decorator Connell Curran | Abbey Homes Design Team
 Architect or Plan Designer.....Jeff Bier/Art Designs, LLC Available



CONTACT BUILDER

Abbey Homes, LLC
 (918) 640-7252
 info@tnhok.com



3 BED **3** BATH **2,399** SQ FT **2,300** LOT SIZE **\$599,000**



VENDORS

Furnishings and Accents Luxe Furniture & Design
 Interior Designer/Decorator Michelle Harrison with Luxe & Adam Curran
 Architect or Plan Designer..... Adam Curran & ART Resources
 Landscaping Cityscape Design
 OtherKazar A/V



CONTACT BUILDER

Archway Homes, LLC
 (918) 210-9612

Bella

FOREST RIDGE - CREEKSIDE VILLAS | 7300 East Norman Street | Broken Arrow Schools

24



3 BED **2.5** BATH **2,299** SQ FT **6,050** LOT SIZE **\$599,000**



Avery

VENDORS

Interior Designer/Decorator Michelle Harrison Luxe Adam Curran
 Architect or Plan Designer RL Keith & Associates & Adam Curran
 Landscaping Cityscape Designs
 Other Kazar A/V



CONTACT BUILDER

Archway Homes, LLC
 (918) 210-9612
 info@archwayok.com

FOREST RIDGE - CREEKSIDE VILLAS | 1228 North 72nd Street | Broken Arrow Schools

25



3 BED **3** BATH **2,329** SQ FT **2,300** LOT SIZE **\$572,000**



VENDORS

Furnishings and Accents J Event and Design
 Interior Designer/Decorator Connell Curran | Cobblestone Homes Design Team
 Architect or Plan Designer Jeff Bier of ART Designs, LLC
 Available - Primary Forest Ridge Entry



CONTACT BUILDER

Cobblestone Homes, Inc.
 (918) 640-7252
 cobblestonehomes@cox.net



4 BED **4.5** BATH **4,324** SQ FT **0.32** LOT SIZE **\$1,125,000**



VENDORS?

Furnishings and Accents Susan Eddings Perez Staging/Abbey Homes
 Interior Designer/Decorator Connell Curran | Cobblestone Homes Design Team
 Architect or Plan Designer Jeff Bier of ART Designs, LLC
 Landscaping J&J Landscaping Available



CONTACT BUILDER

Cobblestone Homes, Inc.
 (918) 640-7252
 cobblestonehomes@cox.net

303 North 85th Court



4 BED **4.5** BATH **4,023** SQ FT **0.28** LOT SIZE **\$1,050,000**



VENDORS

Furnishings and Accents LUXE
 Interior Designer/Decorator Connell Curran | True North Homes Design Team
 Landscaping J&J Landscaping Available



CONTACT BUILDER

True North Homes LLC
 (918) 640-7252
 gant@tnhok.com

401 North 89th Street



HOFFMAN HOMES LUXURY DOWNSIZING™



Our Luxury Downsizing™ concept is the only one of its kind in the Tulsa + OKC Areas.



Hoffman Homes specializes in creating communities for active adults looking to downsize, but not necessarily willing to sacrifice luxury and quality.



The Hoffman Homes experience is designed to create a home that is uniquely yours. No two homes are alike. They are designed to allow you to focus on your projects and hobbies, rather than maintaining a home that no longer suits your lifestyle. Our in-house design team will put your dreams on paper, then make them your reality.



Reserve Your Homesite in Antler Falls!

Discover Broken Arrow's Premiere Active Adult Community



Antler Falls

Antler Falls is a 45-acre gated community in Northeast Broken Arrow located 3 minutes from The Club at Forest Ridge.



This Hoffman Homes Community will feature:

- ALL Single-Story Custom Homes
- Designed For Active Adults
- Gated Entrances
- Brick Privacy Walls and Fences
- Complete Turf Maintenance
- Minimal Upkeep
- Clubhouse with Gym
- Pool
- Pickle Ball Courts
- Putting Green
- Lake with Fountain
- Walking Paths

For Homesite and Custom Home Design Information, contact Chanin at
918.312.3467

To learn more about our process, homes, and available homesites you can also visit:
www.HoffmanCustomHomes.com

Live the Lifestyle You've Waited For!



ANTLER FALLS | 8203 East Indianola Circle | Broken Arrow Schools

28



3 BED **2.5** BATH **2,615** SQ FT **6,687** LOT SIZE **\$821,427**



VENDORS

Furnishings and Accents Louis Alan Design Gallery by the Refuge
Interior Designer/Decorator Amy Cook-Henegar and Taya Andrews
Architect or Plan Designer Ashley Wire and Kelsey Chenoweth
Landscaping Green Pro Landscape and Design
Other Superintendent: Tony Frank
 Neighborhood Located Near East 81st & South 257th



CONTACT BUILDER

Hoffman Homes
 (918) 312-3467
 chanin@hoffmancustomhomes.com

Bradford

ANTLER FALLS | 8116 East Jackson Circle | Broken Arrow Schools

29



3 BED **2.5** BATH **2,774** SQ FT **9,857** LOT SIZE **\$935,040**



VENDORS

Furnishings and Accents Louis Alan Design Gallery by The Refuge
Interior Designer/Decorator Amy Cook-Henegar and Taya Andrews
Architect or Plan Designer Ashley Wire and Kelsey Chenoweth
Landscaping Green Pro Landscape and Design
Other Superintendent: Tony Frank
 Neighborhood Located Near East 81st & South 257th



CONTACT BUILDER

Hoffman Homes
 (918) 312-3467
 chanin@hoffmancustomhomes.com

Custom Plan



3 BED **2.5** BATH **2,639** SQ FT **10,119** LOT SIZE **\$779,947**



Custom Plan

VENDORS

Furnishings and Accents Louis Alan Design Gallery by The Refuge
 Interior Designer/Decorator Amy Cook-Henegar and Taya Andrews
 Architect or Plan Designer Ashley Wire and Kelsey Chenoweth
 Landscaping Green Pro Landscape and Design
 Other Superintendent: Tony Frank
 Neighborhood Located Near East 81st & South 257th



CONTACT BUILDER

Hoffman Homes
 (918) 312-3467
 chanin@hoffmancustomhomes.com



3 BED **2** BATH **1,962** SQ FT **0.19** LOT SIZE **\$414,900**



Osage

VENDORS

Furnishings and Accents Concept Builders
 Interior Designer/Decorator Concept Builders
 Architect or Plan Designer Distinctive Designs
 Landscaping McDermitt Landscaping



CONTACT BUILDER

Concept Builders, Inc.
 (918) 304-7573
 robertkleven@concept-builders.com

EAGLE POINT IV | 11208 South 217th East Avenue | Broken Arrow Schools

32



3 BED **3.5** BATH **3,080** SQ FT **0.66** LOT SIZE **\$649,900**



Caroline 2



CONTACT BUILDER

Paradigm Properties
(918) 261-1774
info@hoppergroup.com

ELM CREEK | 7005 South Maple Avenue | Broken Arrow Schools

33



4 BED **2** BATH **1,940** SQ FT **7,260** LOT SIZE **\$302,000**



Raleigh

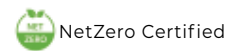
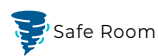
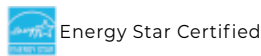
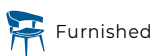
VENDORS

Furnishings and Accents Pure Ambiance
Interior Designer/Decorator Pure Ambiance
Architect or Plan Designer Vendor
Landscaping Vendor
Other Vendor



CONTACT BUILDER

Lennar
(918) 261-9430
emily.konieczny@lennar.com





3 BED **2.5** BATH **2,014** SQ FT **7,546** LOT SIZE **\$379,980**



The Lincoln

VENDORS

Furnishings and AccentsCindy Gaisor with Transitions Home Staging
 Interior Designer/DecoratorCapital Homes Design Team
 Architect or Plan Designer.....Mike Patty
 LandscapingLandmark



CONTACT BUILDER

Capital Homes
 (918) 201-1915
 info@capitalhomes.com



3 BED **2.5** BATH **2,295** SQ FT **12,424** LOT SIZE **\$413,190**



The Augusta

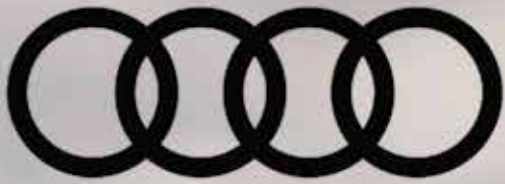
VENDORS

Furnishings and AccentsCindy Gaisor with Transitions Home Staging
 Interior Designer/DecoratorCapital Homes Design Team
 Architect or Plan Designer.....Mike Patty
 LandscapingLandmark



CONTACT BUILDER

Capital Homes
 (918) 201-1915
 info@capitalhomes.com



Audi Tulsa

4208 S Memorial Drive, Tulsa

918-712-2834

AudiTulsa.com





MCCALLUM & SONS
RELIABLE TULSA DRYWALL SINCE 1996

Services include:

- Drywall Installation
- Drywall Finishing
- Smooth Walls
- Level 5 Finish
- Spray Textures
- Metal stud framing
- Acoustical ceilings
- FRP

**Specializing in residential,
multi-family, and commercial.**

www.tulsadrywall.com



SURFACES

Granite ~ Quartz ~ Quartzite
Porcelain Slabs ~ Printed Quartz ~ Marble

918-366-7440
14602 South Memorial Drive
Bixby, OK 74008
www.SurfacesGranite.com



@surfacesgranite



@surfacesgranite @surfacesgranite surfacesgranite.com

THE ESTATES AT RIDGEWOOD | 8400 East Galveston Street | Broken Arrow Schools

36



3 BED **2.5** BATH **1,961** SQ FT **11,405** LOT SIZE **\$365,740**



VENDORS

Furnishings and Accents ...Cindy Gaisor with Transitions Home Staging
 Interior Designer/DecoratorCapital Homes Design Center
 Architect or Plan Designer..... Mike Patty
 Landscaping Landmark



CONTACT BUILDER

Capital Homes
 (918) 201-1915
 info@capitalhomes.com

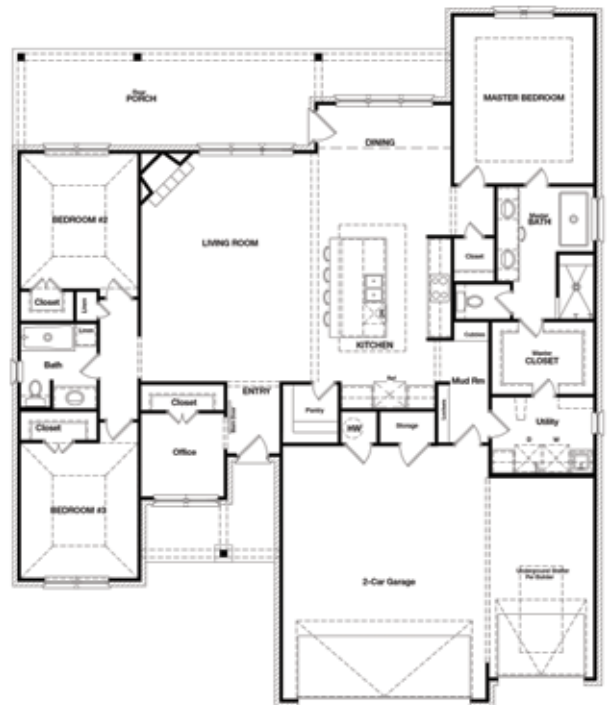
The Tacoma

HIGHLAND RIDGE | 22870 East 106th Place South | Broken Arrow Schools

37



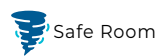
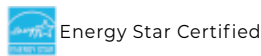
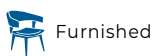
3 BED **2** BATH **2,011** SQ FT **7,800** LOT SIZE **\$383,000**



CONTACT BUILDER

Legacy Home Builders LLC
 (918) 724-9143
 patrickhuntleytulsa@gmail.com

Betty





3 BED **3** BATH **2,363** SQ FT **11,369** LOT SIZE **\$444,900**



The Augusta

VENDORS

Furnishings and Accents ...Cindy Gaisor with Transitions Home Staging
 Interior Designer/Decorator Capital Homes Design Team
 Architect or Plan Designer..... Mike Patty
 Landscaping Landmark



CONTACT BUILDER

Capital Homes
 (918) 201-1915
 info@capitalhomes.com



4 BED **2** BATH **1,813** SQ FT **8,495** LOT SIZE **\$324,850**



The Providence

VENDORS

Furnishings and Accents ...Cindy Gaisor with Transitions Home Staging
 Interior Designer/Decorator Capital Homes Design Team
 Architect or Plan Designer..... Mike Patty
 Landscaping Landmark



CONTACT BUILDER

Capital Homes
 (918) 201-1915
 info@capitalhomes.com

MEADOWVIEW ESTATES | South 309th East Place | Broken Arrow Schools

40



4-5 BED 3 BATH 2,650 SQ FT 0.5 LOT SIZE \$449,000



Come check out this exciting new development in its earliest stages of planning; development & house are still under construction. Imagine the possibilities as this community takes shape and be among the first to explore what will soon become a thoughtfully designed neighborhood. Meadowview Estates is located between 71st and 81st on 305th.



CONTACT BUILDER
BGreen Homes, LLC
(918) 406-1853
bobby@bgreenhomes.com

A.J. Two Story

PINE VALLEY RESERVE | 3809 West Laredo Place | Broken Arrow Schools

41



3 BED 2.5 BATH 2,350 SQ FT 60X200 LOT SIZE \$525,000



VENDORS

Furnishings and Accents Karen Dodson
Interior Designer/Decorator Sharon & Karen
Architect or Plan Designer Rick Dodson
Landscaping Joe Courtney Landscaping
Other We would like to thank all our vendors who participated



CONTACT BUILDER
Dodson Building
(918) 638-3003
dodsonbuilding@cox.net

Falcon Crest



4 BED **4.5** BATH **4,116** SQ FT **1.68** LOT SIZE **\$1,299,000**



Opal

VENDORS

Furnishings and Accents The House Whisperer
 Interior Designer/Decorator Angela Cozort
 Architect or Plan Designer Creative Home Designs
 Landscaping J Horta Landscaping
 Other Oklahoma New Generation Trim LLC
 ARO Painting LLC Rohleder Cabinets

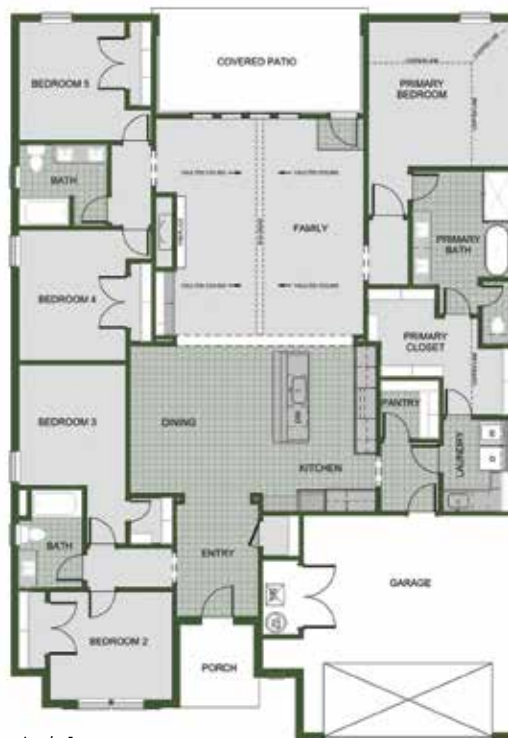


CONTACT BUILDER

Cozort Custom Homes
 (918) 202-3675
 acozort@mcgrawrealtors.com



5 BED **3** BATH **2,575** SQ FT **60X120** LOT SIZE **\$431,857**



2575 - New Lady 1



CONTACT BUILDER

Schubert Mitchell Homes
 (417) 626-7000
 info@schubermitchell.com



4 BED 3.5 BATH 3,416 SQ FT 1.0 LOT SIZE \$379,000



Valhalla

VENDORS

Interior Designer/Decorator.....CGT Builders, LLC
 Architect or Plan Designer.....Red Stag Designs



CONTACT BUILDER

CGT Builders, LLC
 (469) 446-0731
 walkerts1@verizon.net

www.masconstructionok.com

M·A·S CONSTRUCTION

Relationships are the most important thing we build.

918.637.3945 Mark 918.576.4511 Tony

THE STAR OF YOUR NEXT BUILD

PERMASTONE COUNTERTOP SOLUTIONS

TRUSTED BY TULSA'S TOP BUILDERS FOR SHOW-STOPPING COUNTERTOPS AND UNMATCHED CRAFTSMANSHIP

www.permastonetulsa.com

\$20K

Simmons
HOME COLLECTIONS



30+ Years. Local.
Family Owned.

Tour our
Parade
Homes



INCENTIVE

lower your interest rate,
make your monthly payment work for you.



LUXURY SOUTH TULSA CUSTOM HOME BUILDER

*Delivering premier, quality
construction. We work with you
to deliver your new custom
construction home on budget &
without cutting corners.*

918.521.7768

MYTULSAHOMEBUILDER.COM

J. Davis
HOMES

FIND YOUR DREAM HOME

Backed by years in Tulsa's building and real estate world, Amber and her team deliver the expertise, strategy, and service that today's market demands. Integrity, insight, and results.

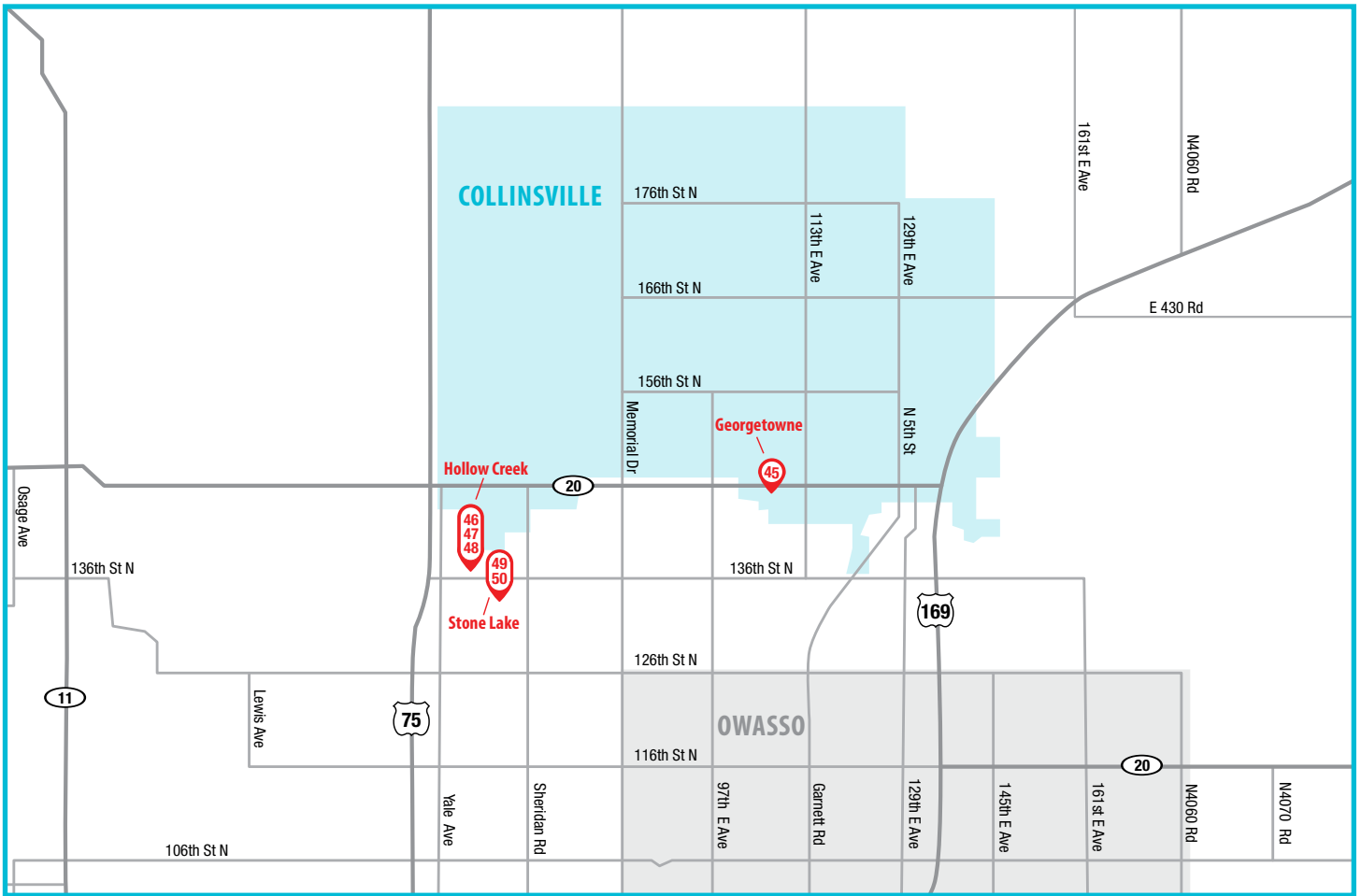
918.521.8417

AMBERDAVISHOMES.COM

AD
AMBER DAVIS
HOME TEAM

KW ADVANTAGE
KELLERWILLIAMS, REALTY





BH BUTLER HOMES

1ST PLACE | BEST INTERIOR DESIGN | PEOPLE'S CHOICE | BEST KITCHEN

TULSA'S
Award-Winning
HOMEBUILDER

AVAILABLE HOMESITES

WWW.BUTLERHOMESLLC.COM | 918-344-6808



3 BED **2** BATH **1,560** SQ FT **8,283** LOT SIZE **\$237,957**



Caroline



CONTACT BUILDER

Glenwood Homes
(918) 340-0323
nick@glenwoodhomesok.com



3 BED **2** BATH **2,072** SQ FT **26,280** LOT SIZE **\$425,000**



Brandon

VENDORS

Furnishings and AccentsHurd Staging
Interior Designer/Decorator..... Kenny W Martin
Architect or Plan Designer..... HomeScape Construction



CONTACT BUILDER

New Age Homes
(918) 576-4342
jared@newagehomes.net

HOLLOW CREEK EXT II | 13799 North 58th East Avenue | Collinsville Schools

47



3 BED **2.5** BATH **2,534** SQ FT **0.85** LOT SIZE **\$529,900**



VENDORS

Furnishings and AccentsSmith Consulting
 Interior Designer/DecoratorSmith Consulting
 Architect or Plan Designer Old School Construction
 Landscaping Homescape Construction



CONTACT BUILDER

Old School Construction
 (417) 527-3986
 mark.hill@kw.com

Barbados

HOLLOW CREEK EXT II | 13623 North 58th East Avenue | Collinsville Schools

48



3 BED **2** BATH **2,060** SQ FT **0.55** LOT SIZE **\$444,900**



VENDORS

Furnishings and AccentsSmith Consulting
 Interior Designer/DecoratorSmith Consulting
 Architect or Plan Designer Old School Construction
 Landscaping Homescape Construction



CONTACT BUILDER

Old School Construction
 (417) 527-3986
 mark.hill@kw.com

Key Largo



4 BED **3** BATH **2,183** SQ FT **22,516** LOT SIZE **\$471,600**



Berkshire



CONTACT BUILDER

Simmons Homes, LLC
(918) 205-0535
info@simmonshomes.com



4 BED **2** BATH **2,084** SQ FT **26,836** LOT SIZE **\$427,900**



Leighton



CONTACT BUILDER

Simmons Homes, LLC
(918) 205-0535
info@simmonshomes.com

BUILD SAVINGS INTO YOUR NEW HOME.



There are many advantages to building an energy-efficient home: lower energy bills, higher resale value, and year-round comfort, to name a few. And when you work with one of the participating homebuilders listed here, **you can also take advantage of up to \$7,500 in PSO rebates.**

These builders understand what it takes to build a home that incorporates many efficiency upgrades for energy savings. Some even go a step beyond by building ENERGY STAR® certified homes. Their energy-efficient efforts include:

Independent Efficiency Ratings: A certified independent HERS (Home Energy Rating System) rater measures your home's energy performance to ensure it meets the appropriate standards.

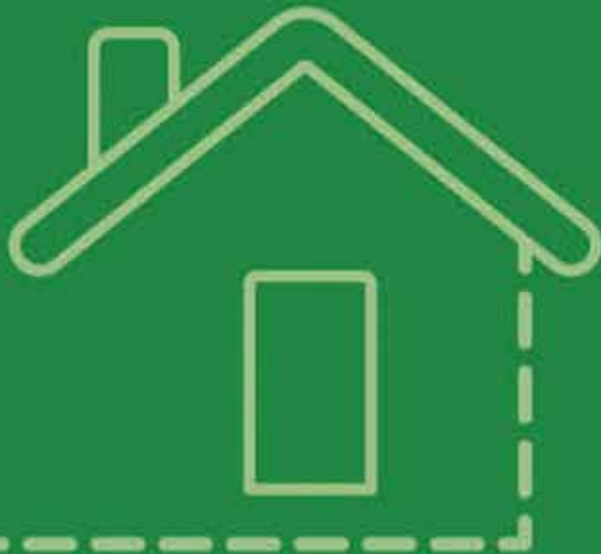
High-Efficiency HVAC: Heating and cooling account for half your energy use. These builders know that the right unit can keep you comfortable without breaking the bank.

Quality Insulation: To be considered energy efficient, walls must be insulated to an R-value (the measurement of the insulation's resistance to heat) of 15 or higher, while attics must have an R-value of 38 or higher.

Build efficiently and save. The Power Is Yours.
PowerForwardWithPSO.com | 1.888.776.1366



An AEP Company



Learn More

Participating Homebuilders

Abbey Homes

Bgreen Homes ● ●

Capital Homes ●

Cobblestone Homes

Concept Builders

D.R. Horton

Epic Custom Homes

Executive Homes

Hoffman Homes

Home Creations

Homes by Classic Properties

Ideal Homes

J. Madden Homes ●

Lennar

Simmons Homes ●

Tara Custom Homes

Tradition Homes

True North Homes

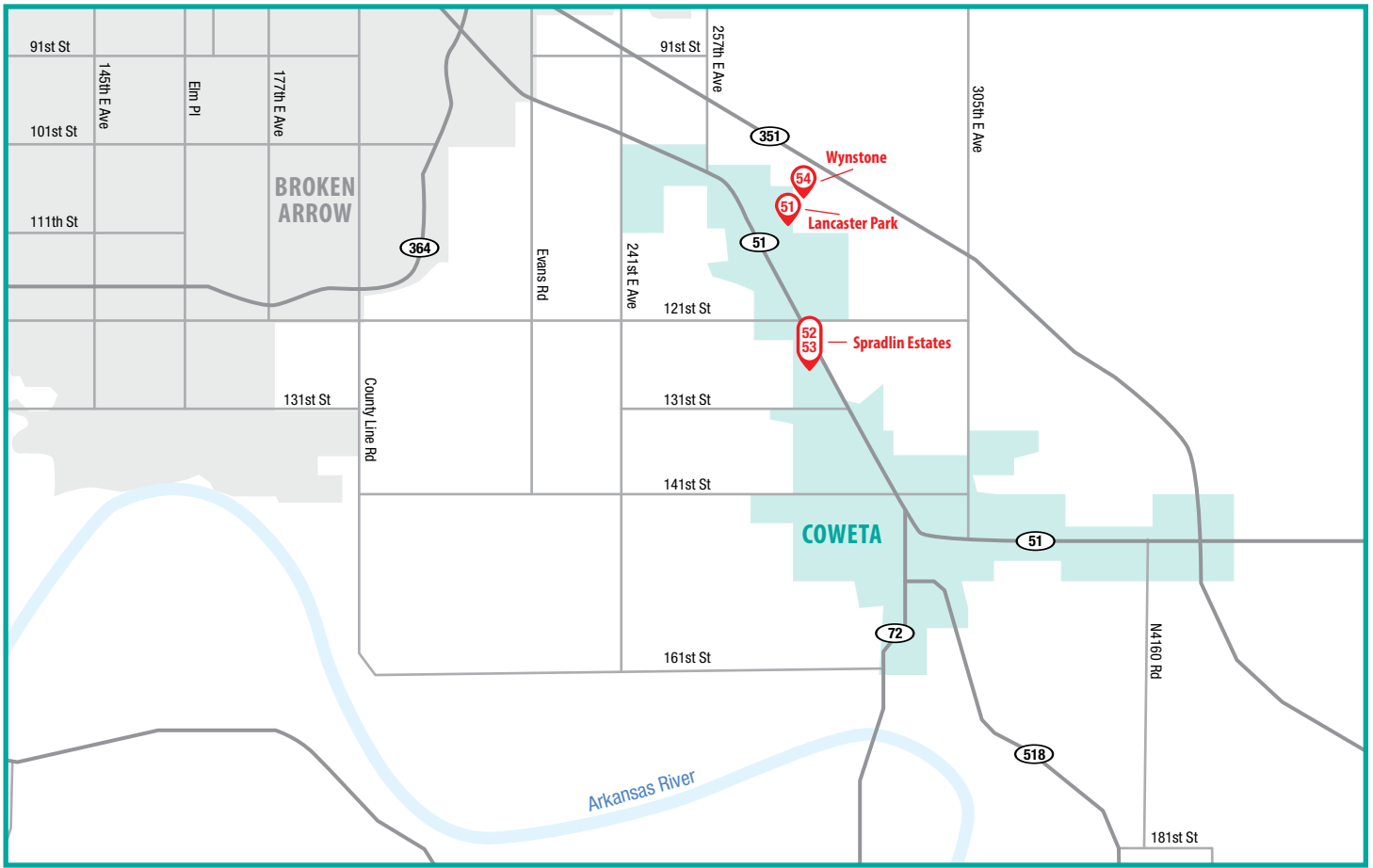


● Builds to ENERGY STAR standards

● Builds to DOE Efficient New Homes standards



Scan or click to see all the ways you can build to save.



GLENWOOD HOMES

Your Tulsa Metro Builder



Jenks

Harvard Oaks
2322 E 134th Circle
Jenks, OK 74008

Broken Arrow

Timber Ridge
Model Home Coming Soon

Collinsville

Georgetowne
2418 W Main St
Collinsville, OK 74021

Coweta

Lancaster Park
10935 S 272nd E Ave
Coweta, OK 74429

Glenpool

Scissortail
1403 E 150th Pl S
Glenpool, OK 74033

Tulsa

Battle Creek Park II
15203 E 40th Pl S
Tulsa, OK 74134



Office: 918.832.0999 | sales@glenwoodhomesok.com



Information subject to change without prior notice. Please visit website for details.



4 BED **2** BATH **1,655** SQ FT **6,600** LOT SIZE **\$240,029**



CONTACT BUILDER

Glenwood Homes
(918) 340-0323
nick@glenwoodhomesok.com

Ford



3 BED **2** BATH **1,600** SQ FT **9,501.96** LOT SIZE **\$298,900**



VENDORS

Furnishings and Accents Elements of Staging
Interior Designer/Decorator BGreen Homes
Architect or Plan Designer ARIS Design Group
Landscaping McDermitt Landscaping



CONTACT BUILDER

BGreen Homes, LLC
(918) 406-1853
bobby@bgreenhomes.com

Whitney



4 BED **2** BATH **1,800** SQ FT **7,999.91** LOT SIZE **\$329,900**



Blakley

VENDORS

Furnishings and Accents Elements of Staging
 Interior Designer/Decorator BGreen Homes
 Architect or Plan Designer ARIS Design Group
 Landscaping McDermitt Landscaping



CONTACT BUILDER

BGreen Homes, LLC
 (918) 406-1853
 bobby@bgreenhomes.com



3 BED **2** BATH **1,714** SQ FT **60X120** LOT SIZE **\$301,471**

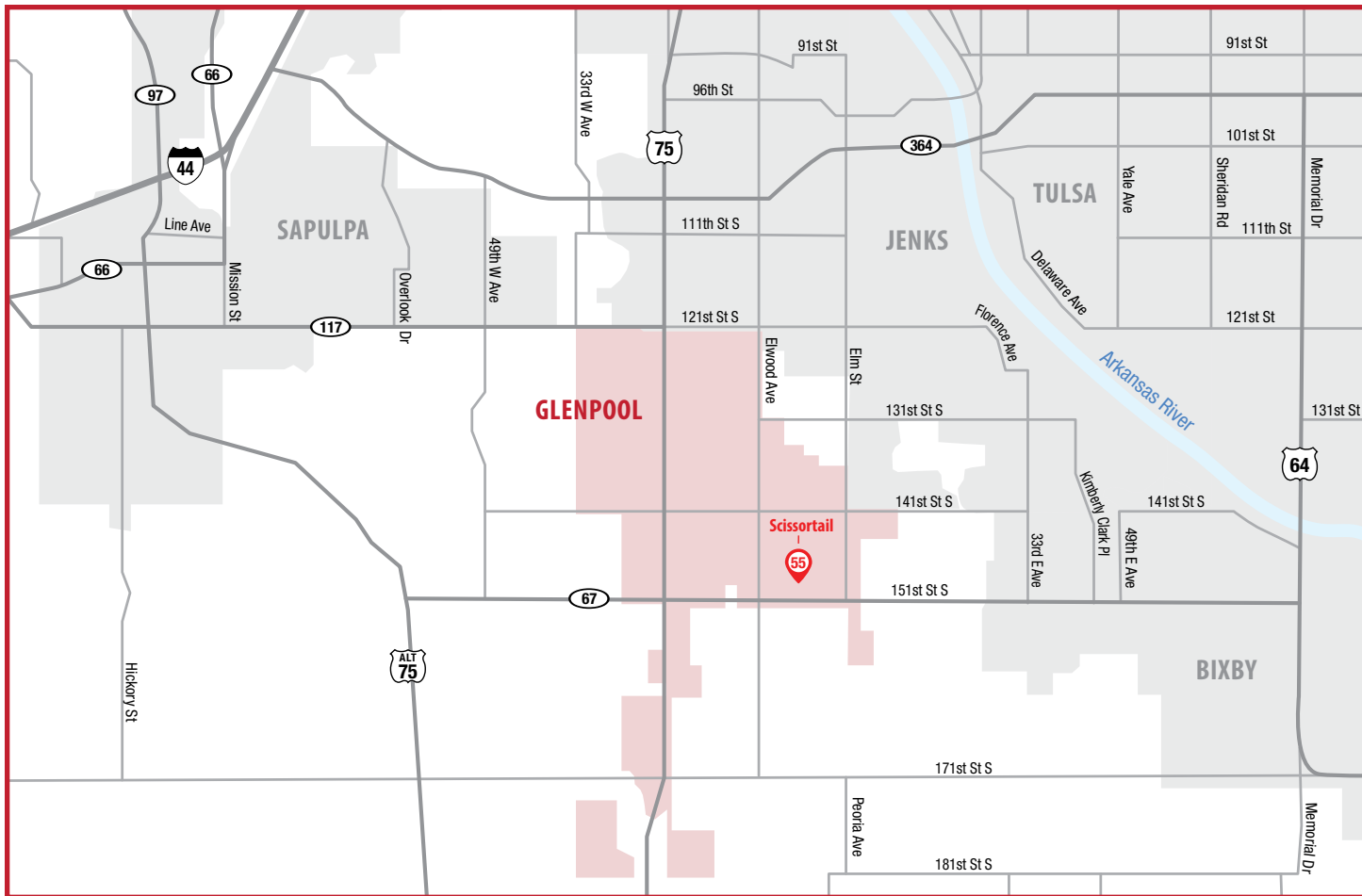


1714 - Marcia Ann



CONTACT BUILDER

Schuber Mitchell Homes
 (417) 626-7000
 info@schubermitchell.com



SCISSORTAIL | 1406 East 150th Place South | Glenpool Schools

55



4 BED 2 BATH 1,833 SQ FT 10,889 LOT SIZE \$272,365

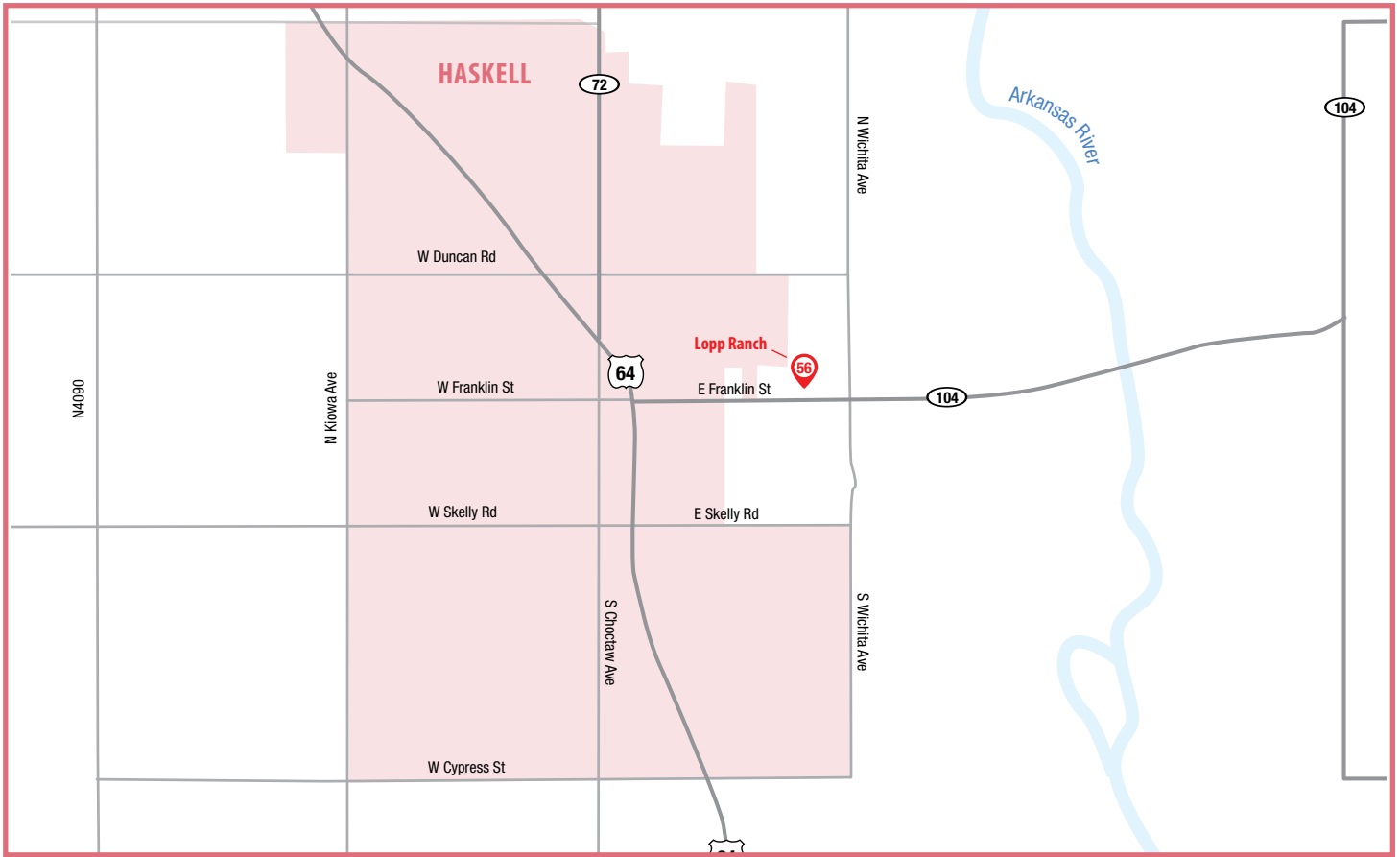


Lindsey



CONTACT BUILDER

Glenwood Homes
(918) 340-0323
nick@glenwoodhomesok.com



LOPP RANCH | 105 North Lopp Ranch Road | Haskell Schools

56



3 BED **2 BATH** **1,050 SQ FT** **4,800 LOT SIZE** **\$190,000**



VENDORS

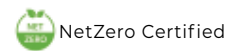
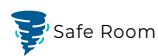
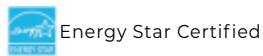
Furnishings and Accents Pure Ambiance
 Interior Designer/Decorator Pure Ambiance



CONTACT BUILDER

Lennar
 (918) 261-9430
 emily.konieczny@lennar.com

Keswick





Financing Every Step from Dirt to Door.

Vacant land to finished home, TTCU has the loans to make it happen.

LAND LOANS

Found the perfect piece of land? Don't let financing be what stands between you and your future address. TTCU finances vacant parcels up to 40 acres when you're ready to plant roots, with low closing costs, competitive rates and no escrow required. You can even roll your land purchase into your construction loan when it's time to build.

CONSTRUCTION LOANS

Building a home from the ground up is one of the most personal things you can do, and TTCU makes the financing less complicated. Our local team handles servicing and underwriting in-house, so the people helping with your loan actually know your name. Plus, experience low closing costs, payments based on what's drawn during construction and a clear path to permanent financing when the build is done.
New construction only.



*If anyone is thinking of building a house, I'd encourage them to just go for it! **We're building our dream house thanks to TTCU!***

J.C. AND JONNA C.
MEMBERS SINCE 2013 AND 2019



Ready to break ground?

TALK TO A TTCU MORTGAGE SPECIALIST TODAY.



All loans subject to program requirements, credit approval and property eligibility. Not all applicants will qualify. TTCU Membership required; eligibility applies. Programs, rates, terms and conditions are subject to change without notice.



More Comfort. More Savings.

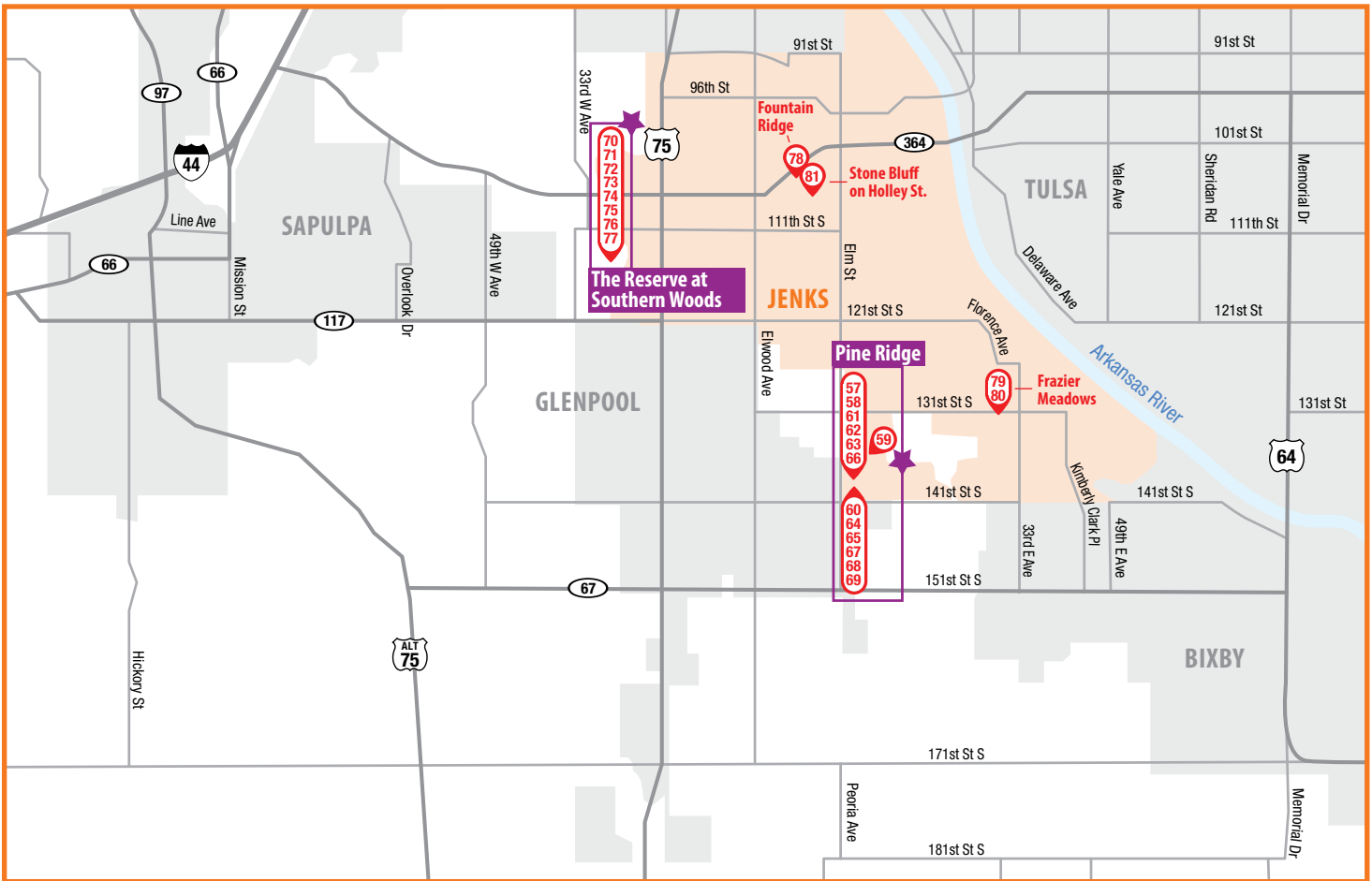
With **natural gas**, you get everyday comforts like warm baths, quick meals and reliable heat, along with **lower energy costs**.

Add appliance **rebates** and you keep more money where it belongs: in your wallet.



For rebates and eligibility,
scan the QR code or visit
oklahomanaturalgas.com/rebates





Home Hardware

your trusted source for premium decorative hardware

10545 South Memorial Drive
918-369-7800



For over
40
Years

Elevate your space with quality doorknobs, cabinet hardware, bath accessories, and more.



PINE RIDGE

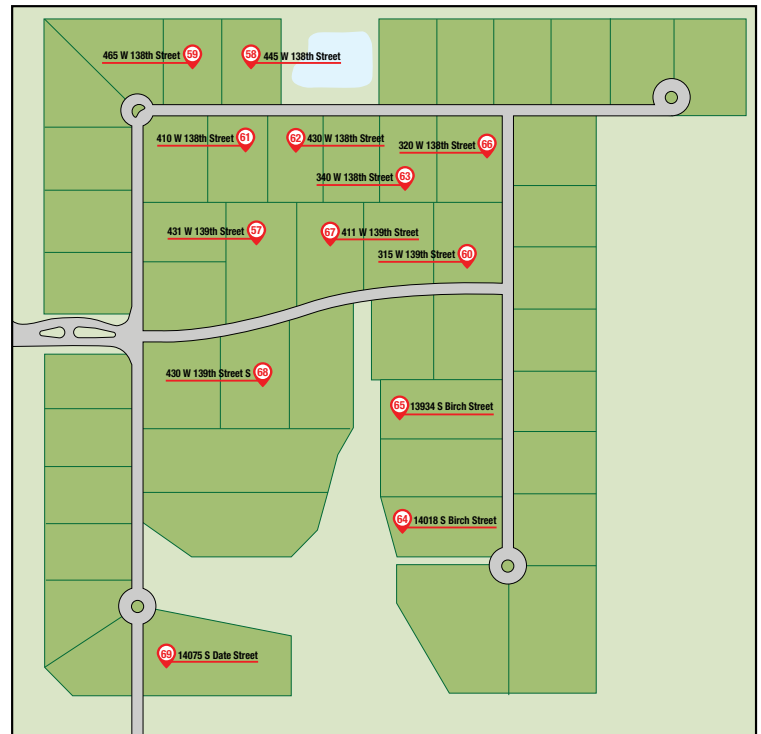


From the intersection of 141st Street and Peoria Avenue, travel north on Peoria Avenue approximately ¼ mile. The main entrance to Pine Ridge is located at 139th Street and Peoria Avenue, on the east side of Peoria.



Pine Ridge is a peaceful, family-focused, and welcoming neighborhood designed around space, nature, and connection. With scenic views, preserved green space, and walkable amenities, it offers a calm, retreat-like atmosphere while encouraging families and neighbors to connect. The result is a community that feels private and serene, yet warm, intentional, and highly livable.

Pine Ridge uniquely combines estate-sized living with refined neighborhood infrastructure. With a minimum half-acre lot size, the community offers space, privacy, and flexibility rarely found in today's developments. Unlike many large-lot neighborhoods that rely on bar-ditch drainage, Pine Ridge features curbed and guttered streets, creating a clean, finished streetscape while maintaining long-term functionality and curb appeal. This thoughtful infrastructure is paired with natural amenities including walking trails, open green space, and a stocked fishing pond, all within a gated community that emphasizes privacy, security, and a strong sense of community. Pine Ridge delivers the space and serenity of a rural setting with the standards and polish of a premier residential neighborhood.



Pine Ridge is governed by thoughtfully crafted restrictive covenants designed to protect long-term value and preserve a cohesive, high-quality neighborhood environment. The covenants establish single-family residential use, architectural review standards to ensure consistent design and aesthetics, and clear expectations for property maintenance. Together, these guidelines promote a well-maintained, visually unified, and family-focused community, while allowing homeowners the flexibility to build distinctive, high-quality homes within a carefully planned framework.

Pine Ridge was developed with a long-term vision focused on quality over quantity. Every aspect of the neighborhood—from lot layout and infrastructure to covenants and amenities—was intentionally planned to create a family-focused, enduring community rather than a short-term, high-density development. Emphasis was placed on preserving natural features, incorporating refined street design, and establishing clear standards that protect homeowners and builders alike. Pine Ridge reflects a commitment to thoughtful development, lasting value, and a neighborhood experience that will stand the test of time.

141 Peoria, LLC

(918) 289-3595 | (918) 402-5402

michael@lambhomesok.com | ashibley1@gmail.com

pineridge.info

Price Range: \$800,000–\$2,000,000

Avg. Square Footage: 3,500 +-

Lot Size: .5 acre–1.3 acre



3 BED **3** BATH **3,411** SQ FT **21,780** LOT SIZE **\$969,900**



Choctaw

VENDORS

Interior Designer/Decorator Castlerock Builders
 Architect or Plan Designer.... Creative Home Design/Castlerock Builders
 Landscaping Cityscape Design



CONTACT BUILDER

Castlerock Builders
 (918) 951-6186
 castlerock1@cox.net



4 BED **4.5** BATH **4,150** SQ FT **21,780** LOT SIZE **\$1,109,900**



VENDORS

Interior Designer/Decorator Castlerock Builders,
 Melissa Engleke - ME Interiors
 Architect or Plan Designer..... Creative Home Design
 Landscaping Cityscape



CONTACT BUILDER

Castlerock Builders
 (918) 951-6186
 castlerock1@cox.net

PINE RIDGE | 465 West 138th Street | Bixby Schools

59



4 BED **4** BATH **3,904** SQ FT **0.524** LOT SIZE **\$1,069,000**



VENDORS

Furnishings and Accents Transitions Home Staging
 Interior Designer/Decorator Stephanie Joy
 Architect or Plan Designer Creative Home Designs
 Landscaping Outdoor Services
 Other South Tulsa Roofing, Metro Appliances,
 Lifestyles Lighting, Home Hardware



CONTACT BUILDER

CHASE RYAN HOMES, LLC
 (918) 760-5679
 crhomes@cox.net

PINE RIDGE | 315 West 139th Street | Bixby Schools

60



4 BED **5** BATH **4,487** SQ FT **0.559** LOT SIZE **\$1,200,000**



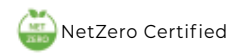
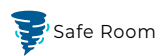
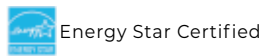
VENDORS

Furnishings and Accents Transitions Home Staging
 Interior Designer/Decorator Stephanie Joy
 Architect or Plan Designer Creative Home Designs
 Landscaping Outdoor Services
 Other Mill Creek Lumber, Lifestyles Lighting, Winnelson
 Metro Appliances



CONTACT BUILDER

CHASE RYAN HOMES, LLC
 (918) 760-5679
 crhomes@cox.net



PINE RIDGE | 410 West 138th Street | Bixby Schools

61



4 BED **6** BATH **4,771** SQ FT **0.502** LOT SIZE **\$1,275,000**



VENDORS

Furnishings and AccentsTransitions Staging
 Interior Designer/DecoratorStephanie Joy
 Architect or Plan Designer.....Stag Designs
 Landscaping Outdoor Services
 Other Brown's Trim Works, Mill Creek Carpet & Tile
 Pella Windows Dowd HVAC



CONTACT BUILDER

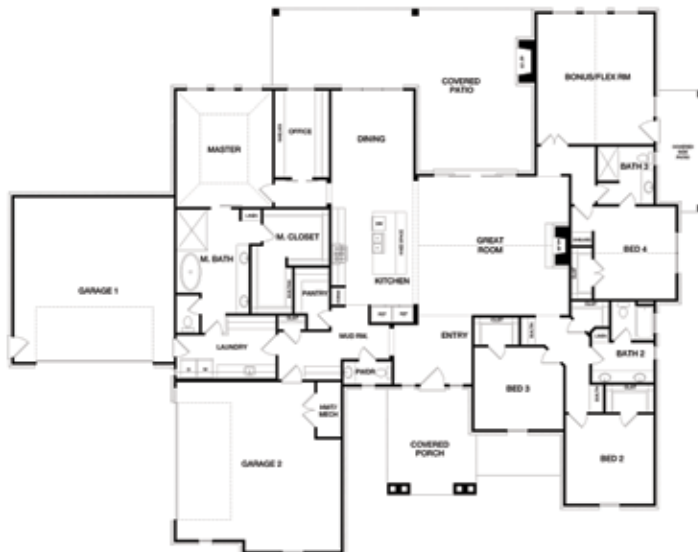
CHASE RYAN HOMES, LLC
 (918) 760-5679
 crhomes@cox.net

PINE RIDGE | 430 West 138th Street | Bixby Schools

62



4 BED **4.5** BATH **3,500** SQ FT **22,000** LOT SIZE **\$1,079,000**



VENDORS

Furnishings and AccentsJ Design
 Interior Designer/DecoratorJ Design
 Architect or Plan Designer.....JEFF BIER/ART DESIGNS, LLC



CONTACT BUILDER

DMG Master Builders LLC
 (918) 630-3423
 puma74011@yahoo.com

Koehler

PINE RIDGE | 340 West 138th Street | Bixby Schools

63



4 BED **4.5** BATH **4,600** SQ FT **0.5** LOT SIZE **\$1,450,000**



VENDORS

Interior Designer/DecoratorTabatha and Ryan Farabough
 Architect or Plan Designer.....Creative Home Designs



CONTACT BUILDER

Farabough Homes, LLC
 (918) 402-3447
 faraboughhomes@gmail.com

Pine Ridge

PINE RIDGE | 14018 South Birch Street | Bixby Schools

64



5 BED **5F | 2H** BATH **4,800 +/-** SQ FT **0.702** LOT SIZE **\$1,500,000**

VENDORS

Interior Designer/DecoratorAmber Davis
 Architect or Plan Designer..... Keith Dalessandro

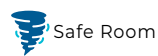
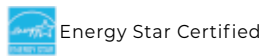


CONTACT BUILDER

J. Davis Homes
 (918) 521-7768
 traci@jdavishomesok.com



Becca Plan



PINE RIDGE | 13934 South Birch Street | Bixby Schools

65



4 BED **4F | 1H** BATH **4,534** SQ FT **0.761** LOT SIZE **\$1,400,000**



Mylie Plan

VENDORS

Interior Designer/Decorator..... Amber Davis
Architect or Plan Designer..... Logan King - Red Stag Designs



CONTACT BUILDER

J. Davis Homes
(918) 521-7768
traci@jdavishomesok.com

PINE RIDGE | 320 West 138th Street | Bixby Schools

66



4 BED **4.5** BATH **3,967** SQ FT **0.5** LOT SIZE **\$1,079,000**



LeCount

VENDORS

Interior Designer/Decorator..... J Events
Architect or Plan Designer..... JEFF BIER/ART DESIGNS, LLC



CONTACT BUILDER

Kent Construction
(918) 630-3423
tag@puma-tag.com

PINE RIDGE | 411 West 139th Street | Bixby Schools

67



4 BED **4.5** BATH **3,860** SQ FT **150X130** LOT SIZE **\$1,089,000**



VENDORS

Furnishings and Accents J Designs
 Architect or Plan Designer..... JEFF BIER/ART DESIGNS, LLC
 Sold | Not available to view



CONTACT BUILDER

La Bella Custom Homes
 (918) 809-4372
 n.puma@me.com

PINE RIDGE | 430 West 139th Street South | Bixby Schools

68



4 BED **3** BATH **4,485** SQ FT **0.65** LOT SIZE **\$1,264,900**



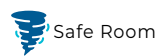
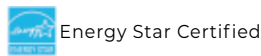
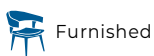
VENDORS

Furnishings and Accents Mathis Homes/Madison George Interiors
 Interior Designer/Decorator Madison George Interiors
 Architect or Plan Designer..... JEFF BIER/ART DESIGNS, LLC
 Landscaping Sprinkler and Sod Connection



CONTACT BUILDER

Mathis Homes
 (918) 724-7577
 mathishomesok@gmail.com





5 BED **5.5** BATH **5,958** SQ FT **1.184** LOT SIZE **\$1,995,000**



VENDORS

Furnishings and Accents Onyx Lane Design Studio
 The House Whisperer, Sue Ann Blair
Interior Designer/Decorator Onyx Lane Design Studio
Architect or Plan Designer Onyx Lane Design Studio
Pool and Outdoor Space Precision Outdoor Living



SOL VALLEY
FINE HOME BUILDERS

CONTACT BUILDER

Sol Valley Fine Homebuilders
 (918) 640-5091
 build@solvalleyco.com

Woodside

Luxury
**Homes Deserve
 Luxury Marketing**

JJHOMES
photography

We produce high-end visual campaigns that highlight the architecture, craftsmanship, and story behind every luxury home. From MLS coverage to full cinematic marketing, every asset is built to position your listing at the top of the market.

Your homes were built to stand out

We make sure they do.

VISIT OUR WEBSITE
INFO@JJHOMESPHOTOGRAPHY.COM

CONTACT INFORMATION
(918) 312 - 5937

A·R·T
DESIGNS
 LLC·COM

ON POINT
 PLANNING

ARCHITECTURAL RESOURCE TEAM

AWARD WINNING
HOME DESIGN

CUSTOM + STOCK PLANS
 REMODS + INTERIOR 3D



AQUA TERRA

POOLS & OUTDOOR LIVING



918-805-9713
aquaterraok.com

124 N 6th St. Jenks, OK 74037





**We'll Beat
Any
Competitor's
Price**

Experience the highest rated & most reviewed Tulsa French Drain & Tulsa Outdoor Landscaping Solution

**100%
FINANCING
AVAILABLE**



**outside inc.
918.999.9008**



**100%
FINANCING
AVAILABLE**



888.302.7888



Experience Tulsa's Highest Rated & Most Reviewed Pool Maintenance & Cleaning Service

www.pelican-tulsa-pool-maintenance.com





Screen Dreams



25 years in business.
Experience matters.

There when you need them, gone when you don't! Phantom Screens let you enjoy the fresh air without annoying bites or buzzes. When they are not in use, they retract out of sight, never interrupting your lifestyle or your view.

Perfect for doors, windows, oversized wall systems and large openings, Phantom Screens provide insect protection, added privacy, shade from the sun and more.



Custom-made and professionally installed so all your screen dreams can come true.



Contact Heidi today at
918-249-1756
Heidi@tulsaareascreen.com

Visit us: tulsaareascreen.com

Follow us:  

THE RESERVE AT SOUTHERN WOODS



the Reserve AT SOUTHERN WOODS

Highway 75 and 111th Street South • Jenks Schools
Exit Highway 75 going west on 111th. Continue west on 111th Street South. The Reserve at Southern Woods development will be on the south side of 111th.

At The Reserve at Southern Woods, we're dedicated to providing residents with a truly exceptional living experience, and that means offering a wide array of amenities to enhance every aspect of life. From recreational facilities like pickleball courts and walking trails to serene green spaces and community gathering areas, there's something for everyone to enjoy.

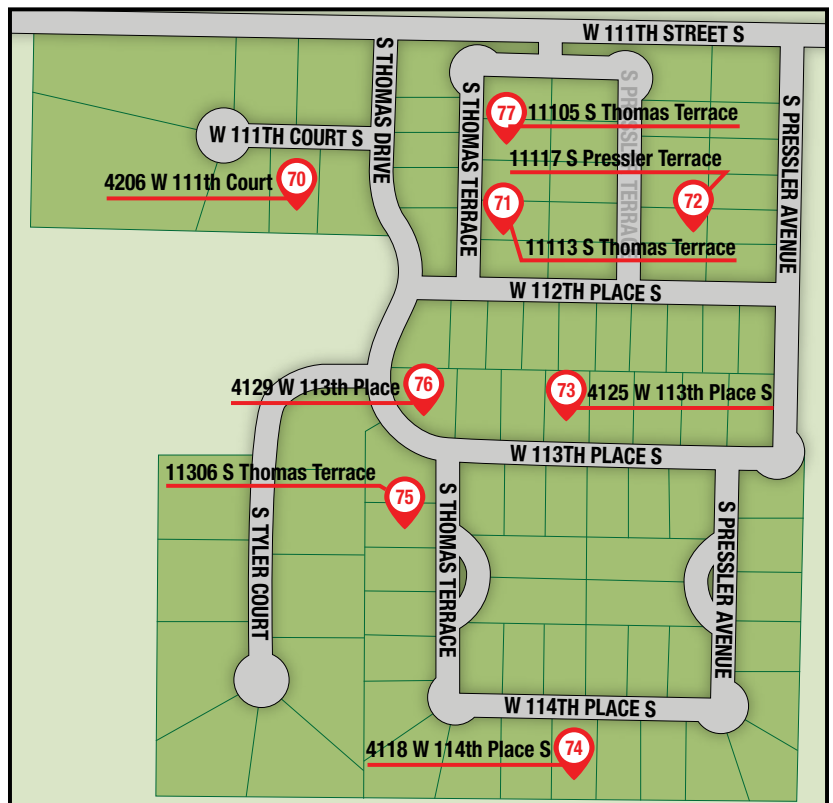
Whether you're looking to stay active, socialize with neighbors, or simply relax in nature, our community amenities are designed to cater to your every need. With a focus on fostering a sense of belonging and well-being, The Reserve ensures that residents can live life to the fullest, right at home.

The Reserve at Southern Woods stands out as Tulsa's one-and-only unique development that seamlessly blends art, design, and luxury living.

Price Range: \$700,000–\$3M
Average Square Footage: 2,800–5,800 +
Lot Size: 0.15-0.5 ac +

Stealth Land Developers

www.reservejenks.com
dig@stealthlanddev.com



THE RESERVE AT SOUTHERN WOODS | 4206 West 111th Court | Jenks West Schools

70



5 BED **5** BATH **5,000+** SQ FT **0.29** LOT SIZE **\$1,499,000**

VENDORS

Interior Designer/DecoratorAbbey Homes Design Team
 Architect or Plan Designer.....JEFF BIER/ART DESIGNS, LLC
 Available | Under Construction



CONTACT BUILDER

Abbey Homes, LLC
 (918) 640-7252
 info@tnhok.com

4206 West 111th Court

THE RESERVE AT SOUTHERN WOODS | 1113 South Thomas Terrace | Jenks West Schools

71



3 BED **3.5** BATH **3,250+** SQ FT **0.19** LOT SIZE **\$800,000**

VENDORS

Furnishings and Accents Stella & Sloan
 Interior Designer/DecoratorConnell Curran |
 Abbey Homes Design Team
 Architect or Plan Designer.....Jeff Bier of ART Designs, LLC
 Available



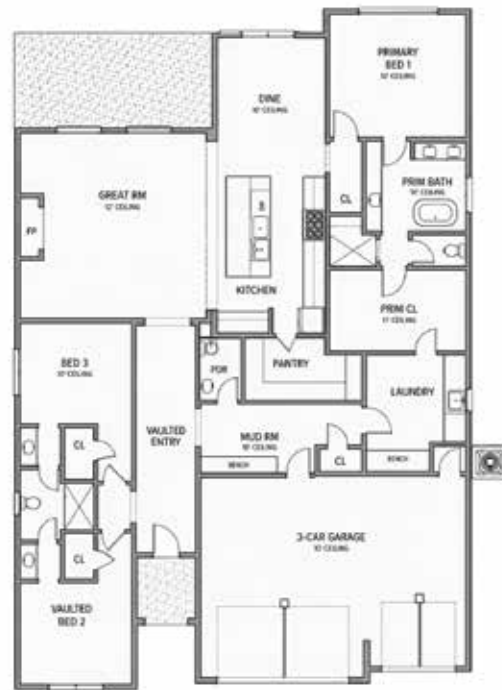
CONTACT BUILDER

Abbey Homes, LLC
 (918) 640-7252
 abbeyhomesllc@gmail.com

1113 South Thomas Terrace



3 BED **3** BATH **2,561+** SQ FT **0.19** LOT SIZE **\$699,000**



VENDORS?

Furnishings and AccentsSusan Eddings Perez Staging
 Interior Designer/DecoratorConnell Curran | Cobblestone Homes Design Team
 Architect or Plan Designer.....Jeff Bier of ART Designs, LLC Available



CONTACT BUILDER
 Cobblestone Homes, Inc.
 (918) 640-7252
 cobblestonehomes@cox.net



3 BED **3.5** BATH **3,346** SQ FT **75'X125'** LOT SIZE **\$859,000**



VENDORS

Interior Designer/Decorator Chalace Designs
 Architect or Plan Designer.....Architectural Resource Team
 Landscaping Full Circle C Landscaping
 Other Eagle Cabinetry, Ambriz Painting
 Craft Tile, Craft Granite & Marble



CONTACT BUILDER
 GEM Contractors, Inc.
 (918) 260-9798
 jholt@cctulsa.com

The Beryl

THE RESERVE AT SOUTHERN WOODS | 4118 West 114th Place South | Jenks Schools

74



4 BED **5** BATH **4,450** SQ FT **10,636** LOT SIZE **\$1,400,000**



VENDORS

Architect or Plan Designer..... Keith Dalessandro with Pinnacle Home Design
 Landscaping..... Living Waters
 Other..... Light and Plumbing Fixtures by Ferguson Appliances by Metro Appliance



CONTACT BUILDER

Malibu Homes LLC
 (918) 829-4554
 malibuhomesk@gmail.com

Huntington

THE RESERVE AT SOUTHERN WOODS | 11306 South Thomas Terrace | Jenks West Schools

75



4 BED **4.5** BATH **3,766** SQ FT **0.31** LOT SIZE **\$920,000–\$930,000**



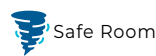
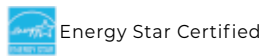
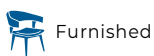
VENDORS

Interior Designer/Decorator..... Chelsea Wilson of Harper House Collective x True North Homes
 Architect or Plan Designer..... Jeff Bier of ART Designs, LLC Sold



CONTACT BUILDER

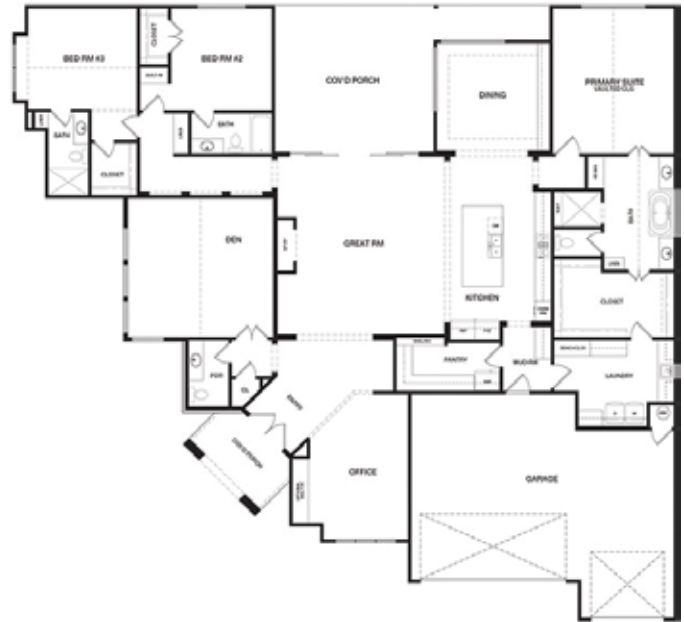
True North Homes LLC
 (918) 640-7252
 gant@tnhok.com





Available | Under Construction

3 BED **3.5** BATH **3,500+** SQ FT **0.28** LOT SIZE **\$949,000**



4129 West 113th Place



CONTACT BUILDER

True North Homes LLC
(918) 640-7252
gant@tnhok.com



VENDORS

Furnishings and AccentsSusan Eddings Perez Staging
Interior Designer/DecoratorConnell Curran |
True North Homes Design Team
Architect or Plan DesignerJeff Bier of ART Designs, LLC
Available

3 BED **3.5** BATH **3,250+** SQ FT **0.21** LOT SIZE **\$799,000**



11105 South Thomas Terrace



CONTACT BUILDER

True North Homes LLC
(918) 640-7252
gant@tnhok.com

**INDEPENDENT
MATERIAL CO.**

EST. 1924

TIMELESS STONE.

Whether it's the timeless beauty of limestone or the enduring strength of granite, you will find unique and beautiful stone choices at Independent Material Co. We carry a diverse pallet of colors, textures and finishes, and custom stonework is our specialty. Let us help turn your vision into the home you've always dreamed of.



BUILT TO LAST.

VISIT US IN TULSA AT
34 NORTH OWASSO AVENUE, TULSA, OK 74120
(918) 582-0196



STELLA & SLOAN

by amy leigh



110 E. Main Street
Jenks, OK 74037
918-738-8484

www.stellaandsloan.com

FOUNTAIN RIDGE | 10517 South Koa Street | Jenks Schools

78



5 BED **5.5** BATH **5,554** SQ FT **0.59** LOT SIZE **\$1,800,000**



Aster Plan



CONTACT BUILDER
StreamLand Homes
(918) 971-9696
info@streamlandhomes.com

FRAZIER MEADOWS | 2033 East 130th Street South | Bixby Schools

79



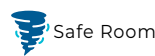
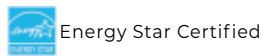
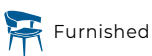
4 BED **3** BATH **2,410** SQ FT **146X151** LOT SIZE **\$518,990**



2410 Nadia



CONTACT BUILDER
Schuber Mitchell Homes
(417) 626-7000
info@schubermitchell.com





4 BED **3** BATH **1,950** SQ FT **0.17** LOT SIZE **\$379,477**



1950-3C4B - New Lady 1



CONTACT BUILDER
Schuber Mitchell Homes
(417) 626-7000
info@schubermitchell.com



4 BED **4.5** BATH **5,191** SQ FT **0.53** LOT SIZE **\$1,599,000**



VENDORS

Furnishings and AccentsSusan Eddings Perez Staging
Interior Designer/DecoratorConnell Curran | Cobblestone Homes Design Team
Architect or Plan DesignerJeff Bier of ART Designs, LLC
LandscapingJ&J Landscaping Available



CONTACT BUILDER
Cobblestone Homes, Inc.
(918) 640-7252
cobblestonehomes@cox.net

10609 South Holley Street

WE DO IT ALL. INSIDE & OUT.



From small repairs to big projects, we handle every detail with **QUALITY, PRECISION & PRIDE.**

We've built a reputation for exceptional trim carpentry in luxury homes and estates. When it comes to the quality and precision that every homeowner desires, we deliver elegant results in a timely and professional manner.

We work with our clients to provide quality trim carpentry at a competitive price. No matter the project, you can count on professionalism and high-quality craftsmanship from our team.

EXPERIENCED & PROFESSIONAL
TRIM CARPENTRY
FOR LUXURY HOMES AND ESTATES



CUSTOM FEATURE WALLS



DECORATIVE CEILINGS & WOOD BEAMS



CUSTOM WINDOW & DOOR TRIM



CUSTOM KITCHENS & MILLWORK

NO JOB IS TOO SMALL!

Whether it's adjusting a door, replacing a piece of siding, or any other minor task, we're here to help. No matter how small the job, you can count on the same **QUALITY & PROFESSIONALISM.**

GIVE US A CALL!



— HERE'S WHAT WE CAN HELP YOU WITH: —

 REPAIR YOUR FRONT DOOR	 REPAIR YOUR BACK DOOR	 SIDING	 FASCIA
 CAR SIDING	 PORCH & POST REPAIRS	 TRIM WORK INSIDE & OUT	 ANY REPAIRS FROM OUTSIDE TO INSIDE
 VINYL FLOORING REPAIRS	 INTERIOR DOORS & HARDWARE	 BASEBOARDS, CASINGS & FINISH DETAILS	 ANY SMALL DETAIL YOU CAN THINK OF!

— NO JOB TOO SMALL. NO DETAIL TOO MINOR. —

Don't be afraid to give us a call!



JUST GIVE US A CALL!
918-691-8353



OR EMAIL US!
HRTriminfo@yahoo.com



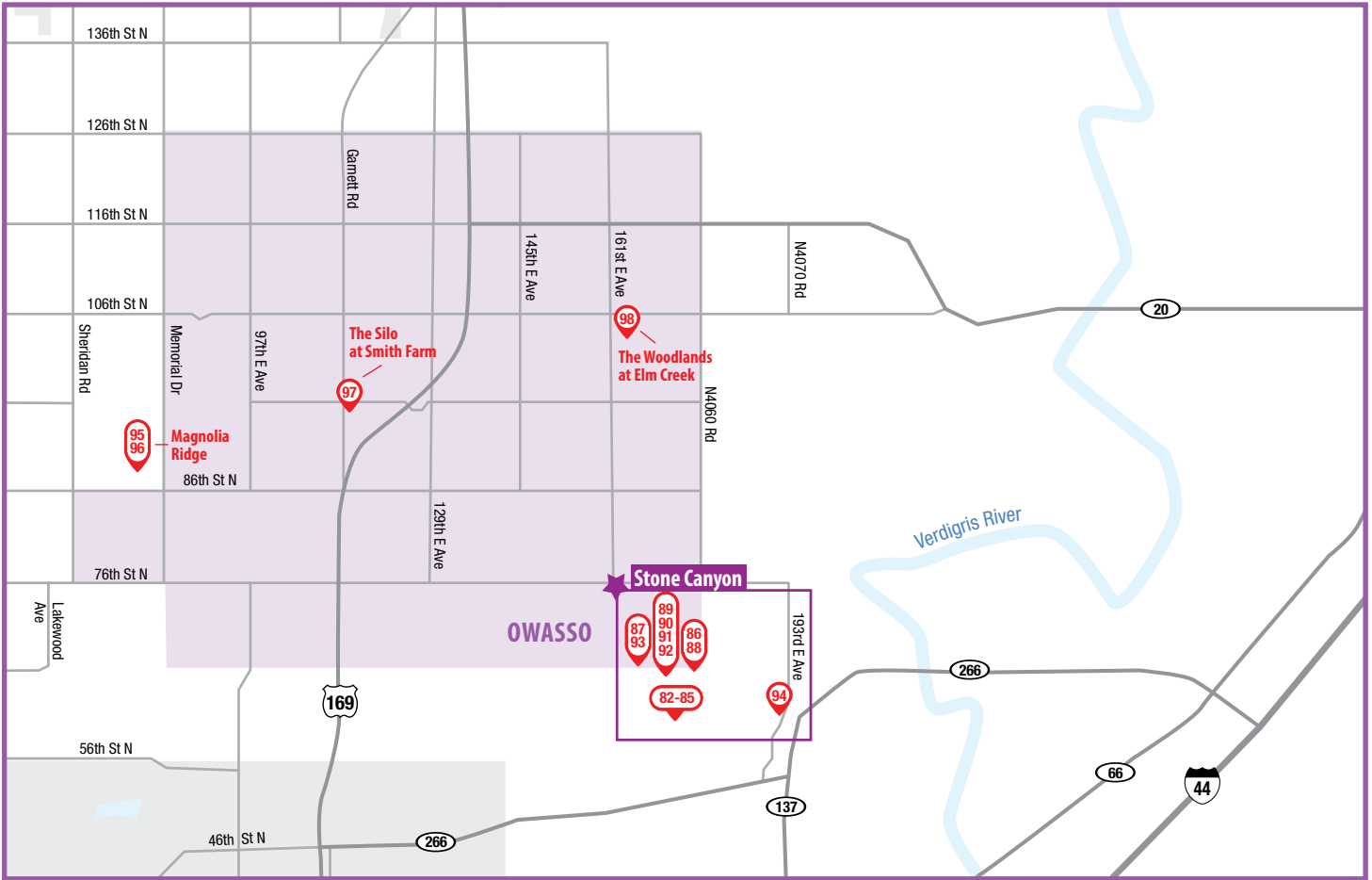
H&R TRIM CARPENTRY
QUALITY WORK. HONEST SERVICE. BUILT TO LAST.



VISIT OUR WEBSITE!
Hrtrimcarpentry.us



SERVING TULSA & SURROUNDING AREAS





MCCALLUM & SONS
RELIABLE TULSA DRYWALL SINCE 1996

Services include:

- Drywall Installation
- Drywall Finishing
- Smooth Walls
- Level 5 Finish
- Spray Textures
- Metal stud framing
- Acoustical ceilings
- FRP

Specializing in residential, multi-family, and commercial.

www.tulsadrywall.com

STONE CANYON

TWILIGHT
TOURS

Friday, June 19

76th Street North & 177th East Avenue • Owasso Schools
From Highway 169, exit 76th Street North and travel east 4 miles to the Stone Canyon entry



Stone Canyon

Owasso Land Trust

(918) 376-6764 | www.stonecanyonliving.com
brian.rose@stonecanyonliving.com

Price Range: \$750,000–\$6,000,000

Average Square Footage: 4,000

Lot Size: .5 AC–1.0 AC

Stone Canyon is a family-friendly, eco-friendly community that links nature to home, offering all ages a richer life connecting families to friends in a spacious environment with trails, lake, park for outdoor fitness, and an appreciation for natural landscape.

Stone Canyon is the largest, most comprehensive planned community in Oklahoma offering large scale with its 120-acre lake and 22-acre park, which includes an amphitheater, sandy beach, fishing pier, natural playscapes, neighborhood resort-style pool, nature trail system, Stone Canyon Elementary School, the Patriot Golf Club, and the headquarters of the Folds of Honor all within 20 minutes of downtown Tulsa.

All new builds have to be approved by the Stone Canyon Architectural Committee. Stone Canyon is governed by a professional HOA.



4 BED **4.5** BATH **6,075** SQ FT **0.63** LOT SIZE **\$2,750,000**



VENDORS

Furnishings and AccentsStella & Sloan
 Interior Designer/Decorator Connell Curran |
 Abbey Homes Design Team
 Architect or Plan Designer.....JEFF BIER/ART DESIGNS, LLC
 LandscapingJ&J Landscaping
 Available



CONTACT BUILDER

Abbey Homes, LLC
 (918) 640-7252
 info@tnhok.com



4 BED **4.5** BATH **5,870** SQ FT **29,959** LOT SIZE **\$2,250,000**



CONTACT BUILDER

Mike Harrison Custom Homes
 (918) 430-5241
 mhcustomhomes22@gmail.com

MHCH - 5883 North Eagle Road

STONE CANYON - THE BLUFFS | 5824 North Eagle Road | Owasso Schools

84



Sold | Under Construction

6 BED **6** BATH **6,905** SQ FT **1.28** LOT SIZE **\$2,000,000**



5824 North Eagle Rd.



CONTACT BUILDER

True North Homes LLC
(918) 640-7252
gant@tnhok.com

STONE CANYON - THE BLUFFS | 17878 East Falcon Pass | Owasso Schools

85



VENDORS

Furnishings and Accents LUXE
Interior Designer/Decorator Chelsea Wilson of Harper House Collective x True North Homes
Architect or Plan Designer Jeff Bier of ART Designs, LLC
Landscaping J&J Landscaping Available

4 BED **4.5** BATH **5,046** SQ FT **0.61** LOT SIZE **\$1,550,000**

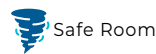


17878 East Falcon Pass



CONTACT BUILDER

True North Homes LLC
(918) 640-7252
gant@tnhok.com





4 BED **3.5** BATH **3,235** SQ FT **0.72** LOT SIZE **\$855,000**



June Plan

VENDORS

Furnishings and AccentsHurd Staging
 Interior Designer/DecoratorBirch Company
 Architect or Plan DesignerKenny Martin
 Landscaping Gardensmiths Landscaping
 Other Kazar AV, Millcreek Lumber, Surfaces, Eden Windows



CONTACT BUILDER

Birch Co.
 (918) 764-8869
 angus@thebirchco.com



5 BED **4.5** BATH **4,477** SQ FT **0.57** LOT SIZE **\$1,350,000**



16760 East Audubon Trail

Available | NOT COMPLETE, UNDER CONSTRUCTION



CONTACT BUILDER

Cobblestone Homes, Inc.
 (918) 640-7252
 cobblestonehomes@cox.net

STONE CANYON - THE COVES | 17744 East Whitetail Cove | Owasso Schools

88



4 BED **4** BATH **4,008** SQ FT **0.75** LOT SIZE **\$1,140,000**



Alkaa

VENDORS

Interior Designer/DecoratorDesign by Dwell
Architect or Plan Designer..... G Kesler



CONTACT BUILDER

Dwell Homes
(918) 704-2102

STONE CANYON - THE COVES | 17584 East White Tail Cove | Owasso Schools

89



4 BED **4.5** BATH **4,390** SQ FT **0.52** LOT SIZE **\$1,150,000**



The Alexander

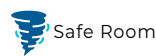
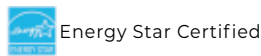
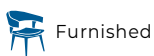
VENDORS

Interior Designer/DecoratorWdesign



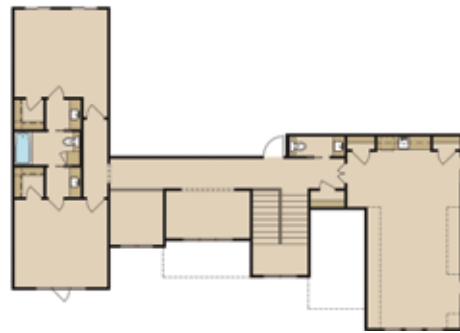
CONTACT BUILDER

Epic Custom Homes
(918) 906-3910
rob@epictulsa.com





4 BED **5** BATH **4,436** SQ FT **0.65** LOT SIZE **\$1,150,000**



Nova

VENDORS

Architect or Plan Designer..... Designs by Shelly
 Landscaping..... Leamy Landscaping



CONTACT BUILDER

Oklahoma Royal Homes
 (918) 693-6084
 tmartin@oklahomaroyalhomes.com
 oklahomaroyalhomes.com



4 BED **4.5** BATH **4,364** SQ FT **22,000** LOT SIZE **\$1,399,000**



Parade 2026

VENDORS

Furnishings and Accents..... SixthDay Homes
 Interior Designer/Decorator..... SixthDay Homes
 Architect or Plan Designer..... Geoff Kesler/SixthDay Homes
 Landscaping..... David Lawson, SixthDay Homes
 Other..... Pool by Artisan Construction



CONTACT BUILDER

SixthDay Homes
 (918) 830-0385
 david@sixthdayhomes.com

STONE CANYON - THE COVES | 17360 Audubon Trail | Owasso Schools

92



Sold | Not Available for Viewing

5 BED **5.5** BATH **4,383** SQ FT **0.51** LOT SIZE **\$1,300,000**



17360 East Audubon Trail



CONTACT BUILDER

True North Homes LLC
(918) 640-7252
gant@tnhok.com

STONE CANYON - THE COVES | 16761 East Audubon Trail | Owasso Schools

93



Sold | Under Construction

4 BED **6** BATH **6,541** SQ FT **1.0** LOT SIZE **\$2,000,000**

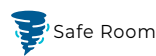
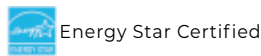
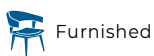


16761 East Audubon Trail



CONTACT BUILDER

True North Homes LLC
(918) 640-7252
gant@tnhok.com





4 BED **4.5** BATH **3,826** SQ FT **0.64** LOT SIZE **\$900,000**



Evermore



CONTACT BUILDER
Epic Custom Homes
(918) 906-3910
rob@epictulsa.com



4 BED **2** BATH **1,833** SQ FT **7,800** LOT SIZE **\$374,800–\$384,800**



Delaney



CONTACT BUILDER
Simmons Homes, LLC
(918) 205-0535
info@simmonshomes.com

MAGNOLIA RIDGE | 8924 North 78th East Avenue | Owasso Schools

96



4 BED **2.5** BATH **2,003** SQ FT **9,791** LOT SIZE **\$471,900**



CONTACT BUILDER
 Simmons Homes, LLC
 (918) 205-0535
 info@simmonshomes.com

Harper

THE SILO AT SMITH FARM | 11320 East 93rd Place North | Owasso Schools

97



4 BED **2** BATH **1,813** SQ FT **5,743** LOT SIZE **\$302,930**



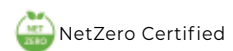
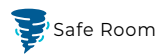
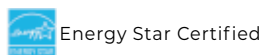
VENDORS

Furnishings and Accents ... Cindy Gaisor with Transitions Home Staging
Interior Designer/Decorator Capital Homes Design Team
Architect or Plan Designer Mike Patty
Landscaping Landmark



CONTACT BUILDER
 Capital Homes
 (918) 201-1915
 info@capitalhomes.com

The Providence





4 BED **2.5** BATH **2,792** SQ FT **0.207** LOT SIZE **\$590,150**



VENDORS

Furnishings and AccentsCindy Gaisor with Transitions Home Staging
 Interior Designer/DecoratorCapital Homes Design Team
 Architect or Plan Designer.....Mike Patty
 LandscapingLandmark



CONTACT BUILDER

Capital Homes
 (918) 201-1915
 info@capitalhomes.com

The Jasmine

MabreyBank
 THE HOMETOWN BANK OF TULSA

A century spent providing the best financial solutions, customer service and community support across the city of Tulsa.

MABREYBANK.COM | 888.272.8866

Member FDIC

LIGHTHOUSE
 ELECTRIC & INTEGRATED SYSTEMS
 OK ALARM LIC#AC244953
 CONTRACTOR LIC# 00112972

Protect What You Value Most

- home & business security systems
- camera systems
- access control
- home video & audio
- fire systems

Contact us Today
 listulsa.com
 918-609-8400
 5531 N Mingo Rd, Tulsa, Oklahoma 74117



BATH & KITCHEN IDEA CENTER

BROKEN ARROW'S BEST KEPT SECRET...
Your one stop shopping experience for
All Kitchen, Bath, and Lighting!



LOOKING FOR DESIGN INSPIRATION?

**Visit our
new showroom**

3039 W. Albany, Broken Arrow
918-806-0842
www.TulsaWinnelson.com
www.tulsawne@winnelson.com

TRUSTED BY *TULSA BUILDERS*
& *HOMEOWNERS* SINCE 1966.



VISIT OUR ***WORKING SHOWROOM***
OF GARAGE DOORS AND OPENERS
SERVICE • REPAIR • INSTALLATION

The Genuine. The Original.



OVERHEAD DOOR COMPANY OF TULSA™

5710 EAST ADMIRAL PLACE
TULSA, OK 74115
(918) 838-9901
overheaddoortulsa.com

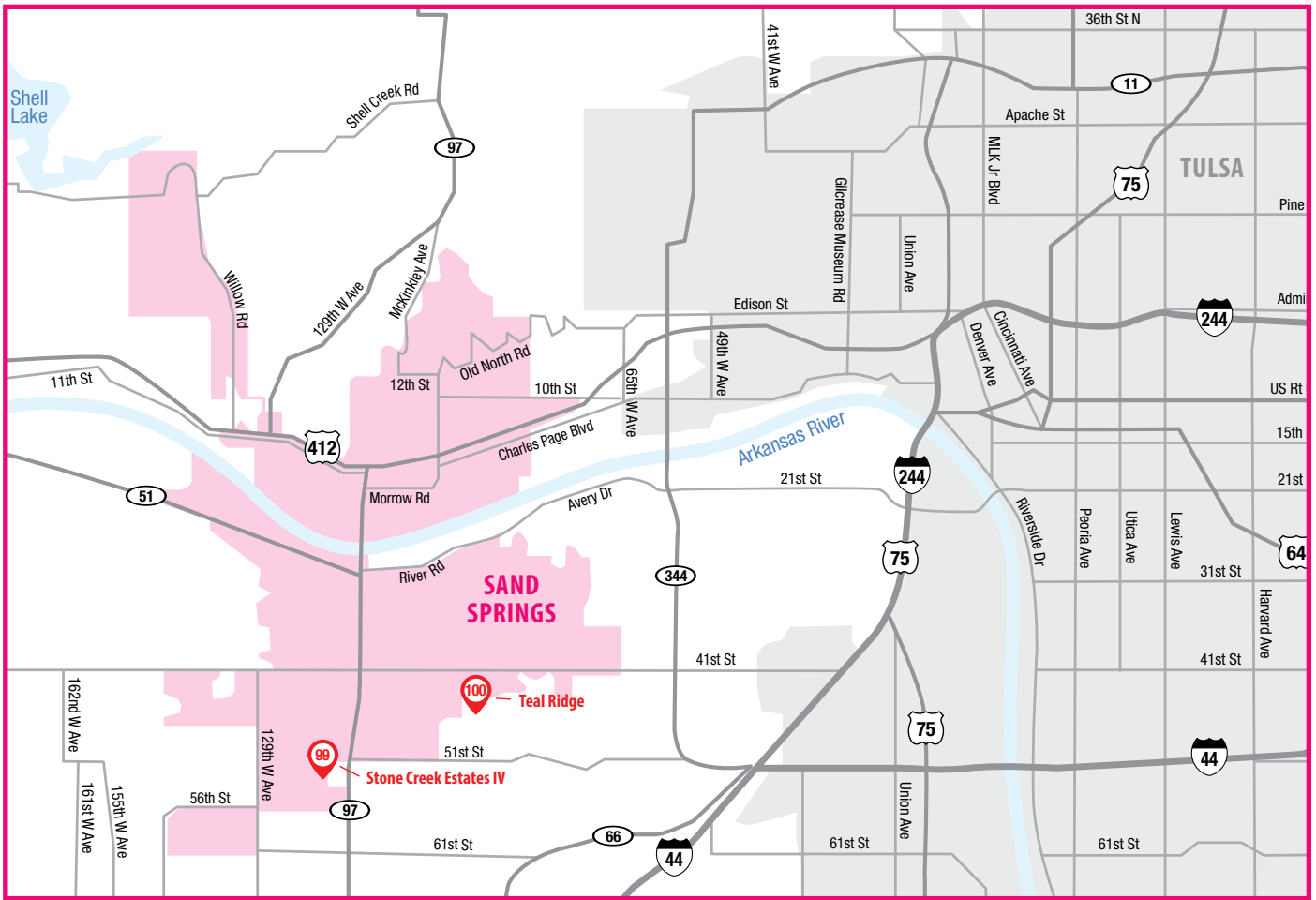


AFFORDABLE,
LUXURY
COMMUNITIES

Homes available throughout
Northeast Oklahoma

- ✓ Competitive incentives
- ✓ Luxury finishes in every home
- ✓ Dedicated Experience Specialist
- ✓ Up to 10 year warranties

schubermitchell.com • 866.799.7891



GET INSPIRED IN OUR
ONLINE GALLERY



VISIT OUR NEW SHOWROOM

5151 S. MINGO ROAD SUITE F. TULSA OK 74146

918-836-5454



4 BED **2** BATH **1,971** SQ FT **0.17** LOT SIZE **\$393,000**



Brenda

VENDORS

Furnishings and Accents Concept Builders
 Interior Designer/Decorator Concept Builders
 Architect or Plan Designer Distinctive Designs
 Landscaping McDermitt Landscaping

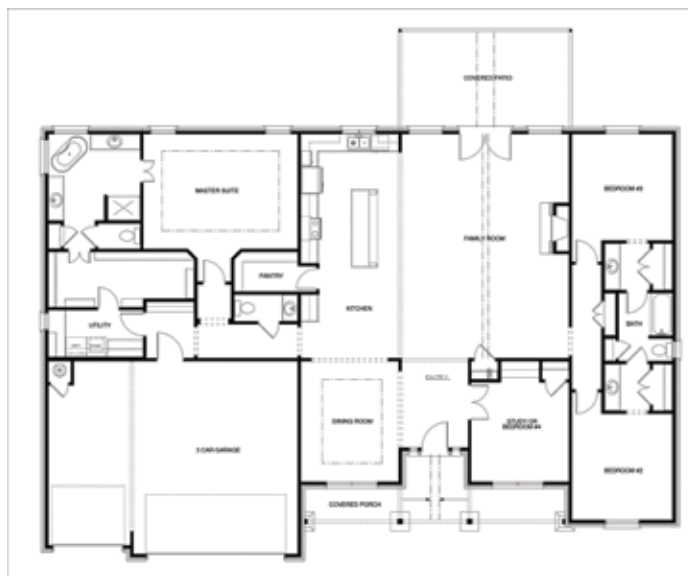


CONTACT BUILDER

Concept Builders, Inc.
 (918) 304-7573
 robertkleven@concept-builders.com



4 BED **2.5** BATH **2,760** SQ FT **0.50** LOT SIZE **\$574,900**



Martine II

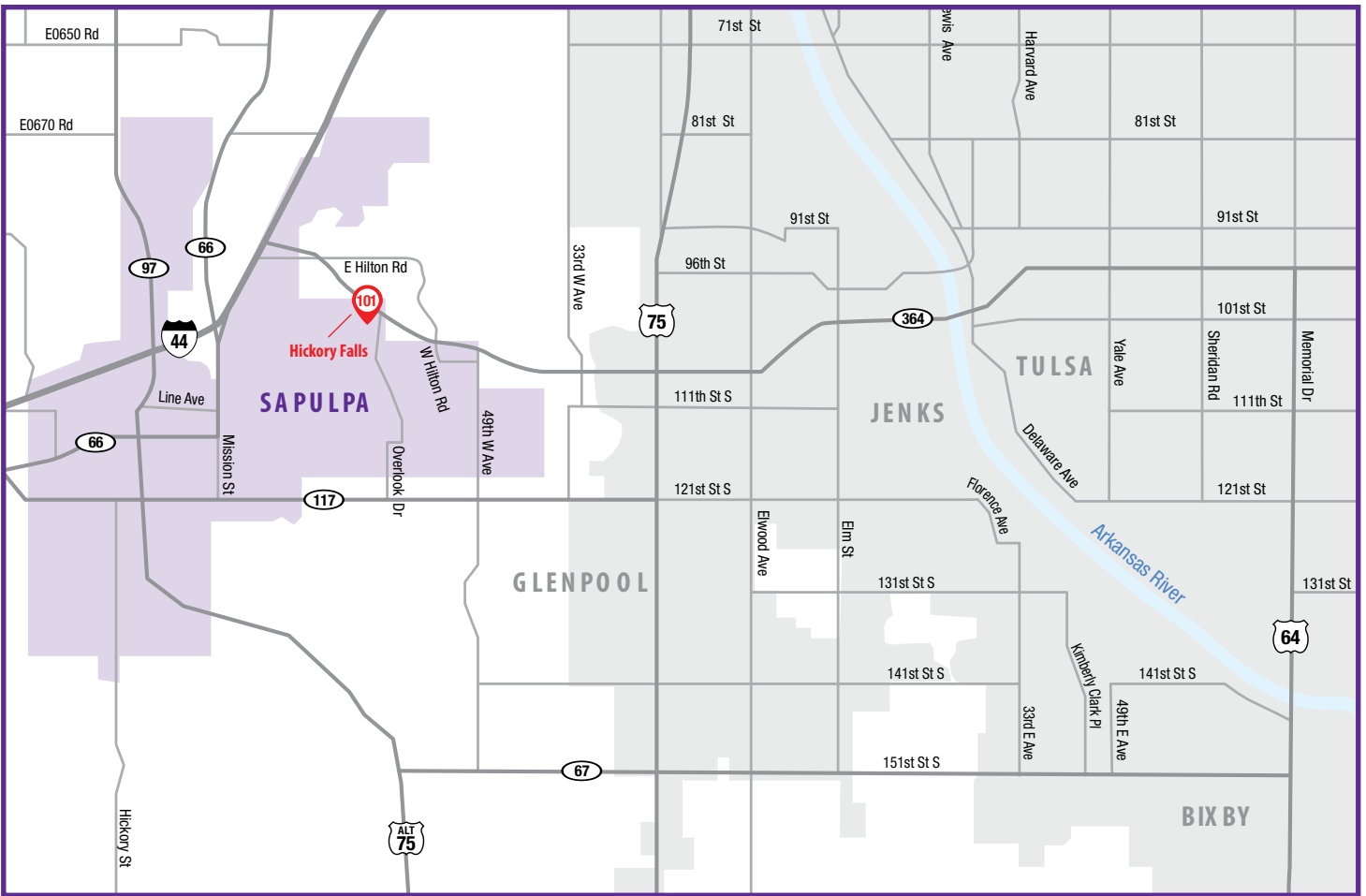
VENDORS

Furnishings and Accents Concept Builders
 Interior Designer/Decorator Concept Builders
 Architect or Plan Designer Distinctive Designs
 Landscaping McDermitt Landscaping



CONTACT BUILDER

Concept Builders, Inc.
 (918) 304-7573
 robertkleven@concept-builders.com



HICKORY FALLS | 2714 Hickory Ridge Drive | Sapulpa Schools

101



4 BED **2.5** BATH **3,224** SQ FT **0.79** LOT SIZE **\$767,900**



VENDORS

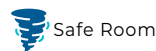
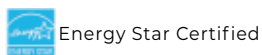
- Furnishings and Accents Concept Builders
- Interior Designer/Decorator Concept Builders
- Architect or Plan Designer Concept Builders
- Landscaping McDermitt Landscaping



CONTACT BUILDER

Concept Builders, Inc.
(918) 304-7573
robertkleven@concept-builders.com

Lincoln





That's my mortgage expert!

At **RCB BANK**, you will find an experienced mortgage lender you trust.



RCBbank.bank/Mortgage

With approved credit,
Terms, qualifications and
other restrictions apply.
NMLS #798151 MEMBER **FDIC**  **LENDER**

HICKORY FALLS



½ ACRE LOTS

BEAUTIFUL VIEWS & SCENERY

MINUTES TO TULSA HILLS

HOMES FROM 500'S AND UP

CREEK TURNPIKE & HICKORY HILL RD



SINCE 1993 | 918-232-4084



WWW.MILESTONEHOMESOK.COM

THE GROVE



SAPULPA, OK

GATED NEIGHBORHOOD

LOCK & LEAVE LUXURY

HOMES FROM 450'S AND UP

HWY 117 & S WATCHORN ST



We're more than mortgage,
we're your neighbor.



Your home is where life happens—and at First United, we're here for it all.

From mortgages to money management, we're more than a lender. We're your neighbor, helping you Spend Life Wisely.

Visit [FirstUnitedTeam.com](https://www.FirstUnitedTeam.com) to learn more.



Member FDIC. Equal Housing Lender. NMLS# 400025

This is not an offer for extension of credit or commitment to lend. All loans subject to program guidelines and final underwriting approval. Not all applicants qualify. Information and pricing are subject to change at any time and without notice. The content in this advertisement is for informational purposes only. Contact your mortgage loan consultant for further information. © 2025 First United Bank. All Rights Reserved.

RECLAIM YOUR GARAGE

- SLAT WALL SYSTEMS
- CUSTOM STORAGE
- FLOOR COATINGS

918 872 7990

SCAN TO
LEARN MORE



HOME + you

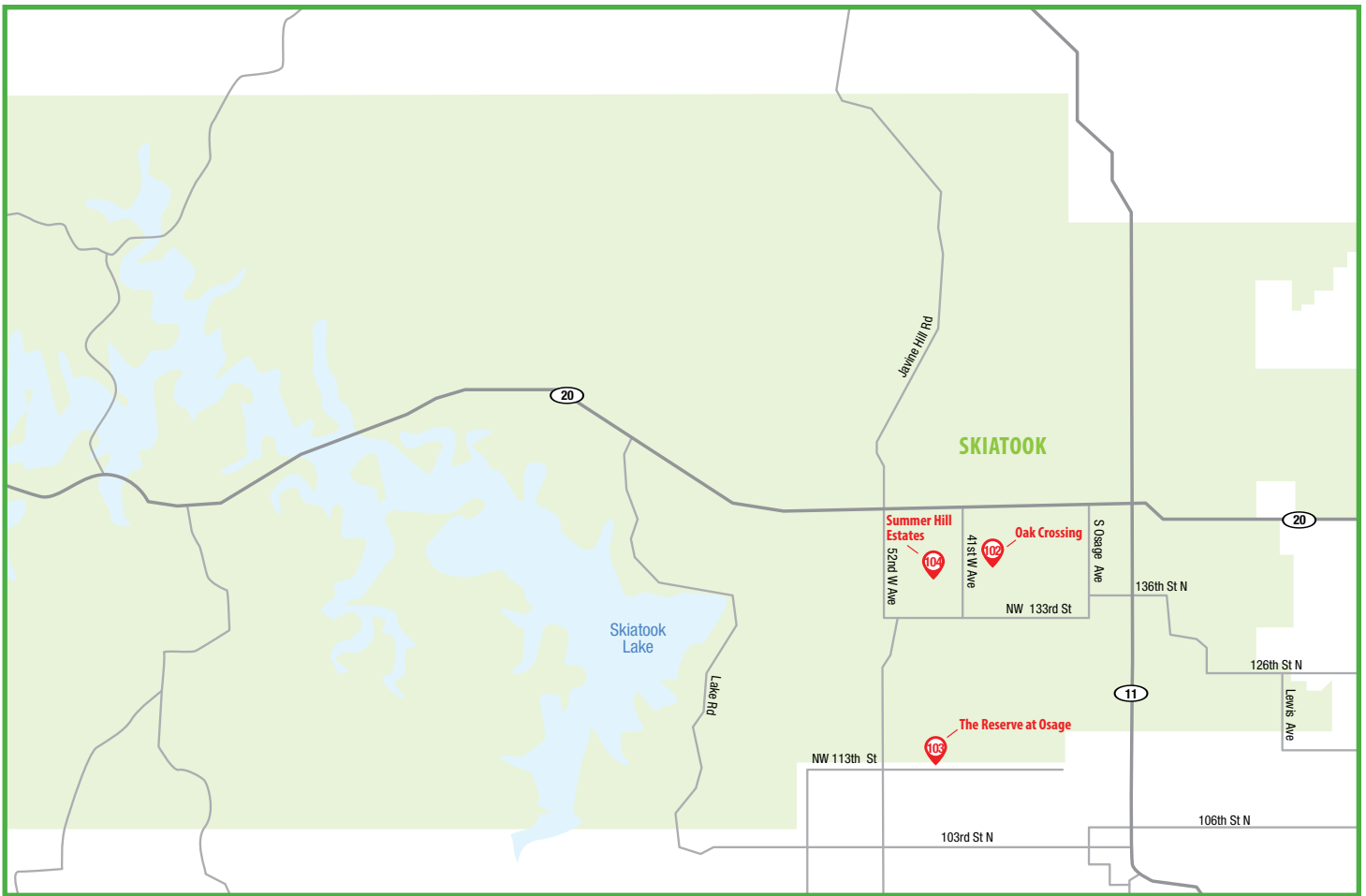
buy, build, remodel
with the one you trust

Quick and easy application
at [TinkerFCU.org/home-loans](https://www.TinkerFCU.org/home-loans)



Federally insured by NCUA
NMLS 490973



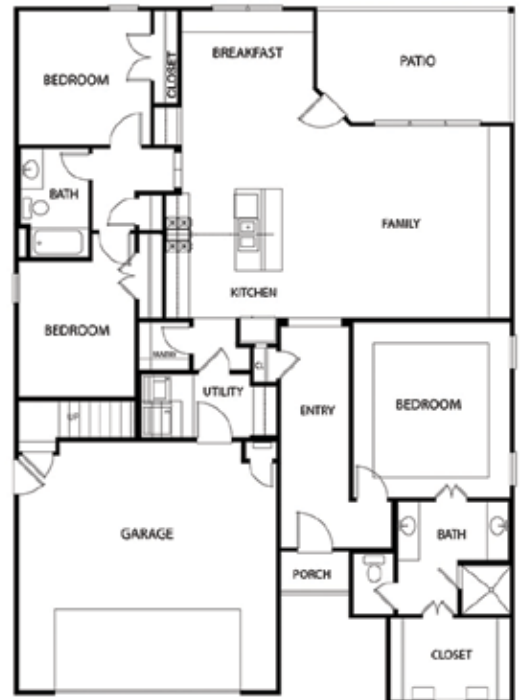


OAK CROSSING | 1005 South Chickasaw Street | Skiatook Schools

102



3 BED **2** BATH **1,750** SQ FT **0.16** LOT SIZE **\$340,000**



VENDORS

Furnishings and Accents Shelly K Staging
 Interior Designer/Decorator RL Keith & Associates



CONTACT BUILDER

Odell Properties, LLC
 (918) 845-1197
 david@odellpropertiesok.com

The Aspen



4 BED **3** BATH **1,998** SQ FT **0.82** LOT SIZE **\$359,000**



VENDORS

Architect or Plan Designer..... Black Gold Builders
 Landscaping..... Black Gold Builders
 Home located on the Sperry / Skiatook city line, address listed as Sperry



CONTACT BUILDER

Black Gold Builders LLC
 (918) 585-5900
 mdaniels@blackgoldgroup.com

Oakridge



4 BED **2.5** BATH **2,183** SQ FT **15,415** LOT SIZE **\$425,000**



VENDORS

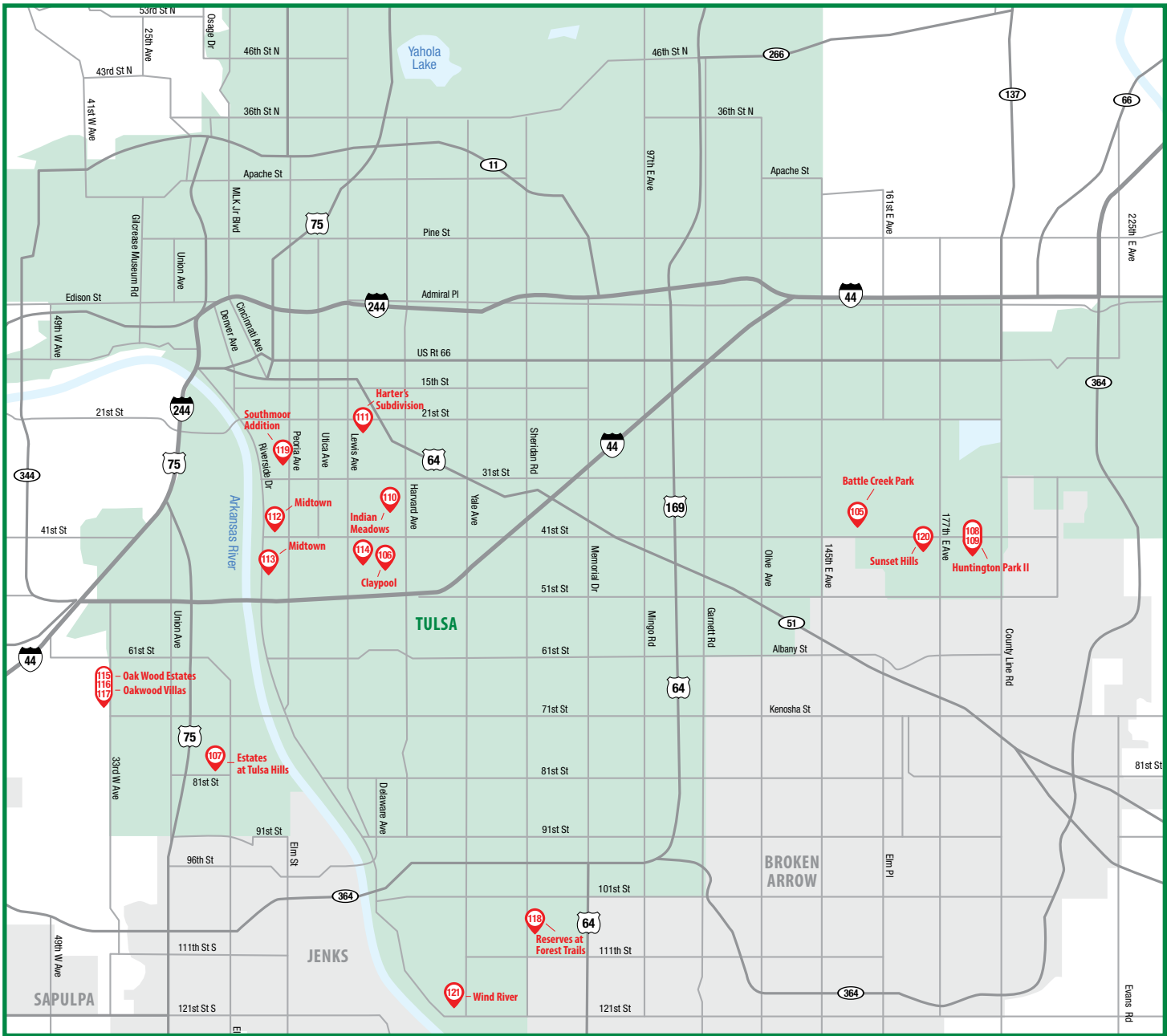
Furnishings and Accents..... Hurd Home Staging & Design
 Interior Designer/Decorator.....Kaitlyn Taylor
 Architect or Plan Designer..... Designs By Shelly
 Landscaping..... Covenant Sod & Landscape



CONTACT BUILDER

Juniper Home Group
 (918) 798-2544
 trevor@jhghomes.com

Redbud



BUILT TO
close

Every great build deserves a smooth closing. We partner with builders to protect timelines, contracts, and buyers so you can focus on building what matters.

Executives
 TITLE & ESCROW, LLC.



4 BED **3** BATH **2,183** SQ FT **10,248** LOT SIZE **\$337,875**

VENDORS

Interior Designer/Decorator In House Designer



CONTACT BUILDER

Glenwood Homes
(918) 340-0323
nick@glenwoodhomesok.com



Eleanor



4 BED **4.5** BATH **4,500** SQ FT **0.4** LOT SIZE **\$1,500,000**

VENDORS

Interior Designer/Decorator Tabatha and Ryan Farabough
Architect or Plan Designer Creative Home Designs



CONTACT BUILDER

Farabough Homes, LLC
(918) 402-3447
faraboughhomes@gmail.com



ESTATES AT TULSA HILLS | 8842 South Guthrie Court West | Jenks Schools

107



5 BED **5.5** BATH **6,000** SQ FT **0.68** LOT SIZE **\$1,750,000**



VENDORS

Interior Designer/Decorator Emily Davis Interiors and Sarah Clavin
 Architect or Plan Designer Studio Cassa
 Landscaping Alchemy Exteriors
 Other Lighting and Plumbing by Ferguson
 Tile - both custom and Mill Creek



CONTACT BUILDER

Vision Homes of Oklahoma
 (918) 798-4581
 visionhomesoklahoma@gmail.com

The Westcourt

HUNTINGTON PARK II | 4461 South 181st East Avenue | Broken Arrow Schools

108



3 BED **2** BATH **2,429** SQ FT **0.16** LOT SIZE **\$457,900**



VENDORS

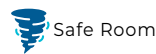
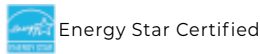
Interior Designer/Decorator Jessica Mitchell
 Architect or Plan Designer Designs by Shelly



CONTACT BUILDER

Butler Homes LLC
 (918) 344-6808
 contactus@butlerhomesllc.com

New Haven





4 BED **2.5** BATH **2,238** SQ FT **0.182** LOT SIZE **\$459,900**



VENDORS

Furnishings and Accents Concept Builders
 Interior Designer/Decorator Concept Builders
 Architect or Plan Designer Distinctive Designs
 Landscaping McDermitt Landscaping



CONTACT BUILDER

Concept Builders, Inc.
 (918) 304-7573
 robertkleven@concept-builders.com

Dorsey V | not available for tours



5 BED **5.5** BATH **4,534** SQ FT **0.30** LOT SIZE **\$1,630,000**



VENDORS

Furnishings and Accents LUXE
 Interior Designer/Decorator Abbey Homes Design Team
 Architect or Plan Designer JEFF BIER/ART DESIGNS, LLC
 Landscaping J&J Landscaping
 Sold | Not Available for Viewing



CONTACT BUILDER

Abbey Homes, LLC
 (918) 640-7252
 abbeyhomesllc@gmail.com

3737 South Evanston Avenue

HARTER'S SUBDIVISION | 2535 East 25th | Tulsa Schools

111



3 BED **3.5** BATH **3,713** SQ FT **0.51** LOT SIZE **\$1,750,000**



Ithaca

VENDORS

Interior Designer/Decorator Design Invested by Johnathon Kok
 Architect or Plan Designer.....Morrison Landscape Services Steve Morrison



CONTACT BUILDER

Epic Custom Homes
 (918) 906-3910
 rob@epictulsa.com

MIDTOWN | 4133 South Detroit | Tulsa Schools

112



4 BED **3.5** BATH **3,265** SQ FT **N/A** LOT SIZE **\$849,000**



41 Detroit

VENDORS

Furnishings and Accents J. Design
 Interior Designer/DecoratorJEFF BIER/ART DESIGNS, LLC



CONTACT BUILDER

La Bella Custom Homes
 (918) 809-4372
 n.puma@me.com



4 BED **3** BATH **2,550** SQ FT **NA** LOT SIZE **\$625,000**



CONTACT BUILDER

La Bella Custom Homes
(918) 809-4372
n.puma@me.com



5 BED **5.5** BATH **5,000** SQ FT **0.44** LOT SIZE **\$1,699,000**



VENDORS

Furnishings and Accents LUXE
Available | Under Construction



CONTACT BUILDER

True North Homes LLC
(918) 640-7252
gant@tnhok.com

4609 South Birmingham Avenue

COZORTCUSTOMHOMES.COM

918.202.3675

COZORT
CUSTOM HOMES

WHERE LEGACY MEETS LIVABILITY



3RD GENERATION



HOME BUILDER



ARTISAN POOL BUILDER



918-407-2433

[Facebook.com/Artisanpools](https://www.facebook.com/Artisanpools)

Come see our other Parade of Homes pools at:

8801 E. Elgin St., Broken Arrow, OK 74014
8116 E. Jackson Cr., Broken Arrow, OK 74014
701 N. 80th St., Broken Arrow, OK 74014

340 W 138th St., Bixby, OK 74008
4118 W. 114th Pl., Jenks OK 74137
17454 E. Whitetail Cove, Owasso, OK 74055
5907 N. Eagle, Owasso, OK 74055

OAKWOOD ESTATES | 3314 Cypress Hill Road | Sapulpa Schools

115



3 BED **3** BATH **2,586** SQ FT **0.17** LOT SIZE **\$639,000**



Harper



CONTACT BUILDER

Scissortail Builders
(918) 521-2328
scissortailbuilders@gmail.com

OAKWOOD VILLAS | 3308 Cypress Hill Road | Sapulpa Schools

116



4 BED **4** BATH **3,091** SQ FT **0.25** LOT SIZE **\$649,000**



VENDORS

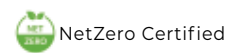
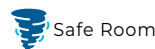
Interior Designer/Decorator.....Sarah Clavin
Architect or Plan Designer.....CHD



CONTACT BUILDER

Vision Homes of Oklahoma
(918) 798-4581
visionhomesoklahoma@gmail.com

The Haven





5 BED **4** BATH **3,609** SQ FT **0.20** LOT SIZE **\$795,000**



VENDORS

Interior Designer/Decorator CHD



CONTACT BUILDER

Vision Homes of Oklahoma
(918) 798-4581
visionhomesoklahoma@gmail.com

The Blackridge



4 BED **5** BATH **5,745** SQ FT **1.0** LOT SIZE **\$1,650,000**



VENDORS

Interior Designer/Decorator R.L. Keith & Associates Home Design



CONTACT BUILDER

The Brumble Group
(918) 299-0042
clintb@thebrumblegroup.com

10775 Custom

SOUTHMOOR ADDITION | 1226 East 30th Street | Tulsa Schools

119



4 BED **6** BATH **4,472** SQ FT **0.19** LOT SIZE **\$1,490,000**



1226 East 30th Street

VENDORS

Furnishings and Accents Susan Eddings Perez Staging
 Interior Designer/Decorator Connell Curran | True North Homes Design Team
 Architect or Plan Designer Jeff Bier of ART Designs, LLC
 Landscaping J&J Landscaping Available



CONTACT BUILDER

True North Homes LLC
 (918) 640-7252
 gant@tnhok.com

SUNSET HILLS | 4346 South 173rd East Avenue | Broken Arrow Schools

120



3 BED **2.5** BATH **2,709** SQ FT **9,000** LOT SIZE **\$549,900**

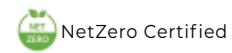
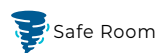
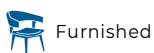


Magnolia



CONTACT BUILDER

Envision Homes LLC
 (918) 260-7841
 mike.parks1@cox.net





4 BED **3** BATH **3,100** SQ FT **0.2** LOT SIZE **\$750,500**



VENDORS

Interior Designer/Decorator Tabatha and Ryan Farabough
 Architect or Plan Designer Creative Home Designs



CONTACT BUILDER
 Farabough Homes, LLC
 (918) 402-3447
 faraboughhomes@gmail.com

FIND YOUR DREAM HOME



Finding a dream home is now easier than ever with the **Tulsa Parade of Homes App and Website!**
 Both tools allow users to browse photo galleries and floor plans, filter homes that meet your desired criteria, get directions and more.



tulsaparadeofhomes.com



Dana Build and Design

Abbey Homes, LLC

(918) 640-7252

www.abbeyhomesok.com
abbeyhomesllc@gmail.com

Abbey Homes is a luxury, custom homebuilder in the Tulsa surrounding area. The company has been building quality homes since 2012 and is known for its hands-on approach in the design and planning process with its clients. Owner, Connell Curran, is a second-generation builder who was born and raised in Tulsa, Oklahoma. He graduated with honors from Oral Roberts University with a degree in business administration. Passionate about construction, Curran leads the Tulsa market in exceptional, functional, and forward-thinking design in homebuilding/luxury remodeling. Within Abbey Homes, Cobblestone Homes, and True North Homes, Connell has curated a team that utilizes leading technology and practices, so that every element is strategically executed according to the needs of each and every client.

.....

Archway Homes, LLC

(918) 210-9612

www.archwayok.com
info@archwayok.com

Adam Curran, owner of Archway Homes, has spent over 20 years building and remodeling homes across the Tulsa area. Known for award-winning Parade homes and thoughtful design, Curran focuses on craftsmanship, livable luxury, and creating distinctive homes tailored to each client.

.....

Beacon Homes

(405) 407-1205

<https://mybeaconhome.com>
brandy@mybeaconhome.com

Beacon Homes has been building thoughtfully designed, energy-efficient homes across the Oklahoma City and Tulsa metro areas since 2003. Guided by quality craftsmanship and a commitment to families, every home is built the right way—designed for comfort, cleaner indoor air, strength, and lasting performance, creating spaces where life, memories, and communities grow.

.....

BGreen Homes, LLC

(918) 406-1853

www.bgreenhomes.com
bobby@bgreenhomes.com

BGreen Homes has created the perfect combination of quality, true craftsmanship, and a man at the helm with an inexhaustible love for building or remodeling a home that not only meets your standards but also his in every way. Robert (Bobby) Green’s expertise began over 19 years ago, when he joined a team of Realtors, quickly moved into the top sales position with a premier Tulsa builder, and after several years learning the ins and outs of the industry, he realized there was a better way to build a home a buyer would love today, tomorrow, and always.

Green takes great pride in having all his homes carry the highest energy-efficient rating available in the Tulsa and surrounding area. Now, he raised the bar again by being the only 100% NetZero builder in Oklahoma. Whether it’s \$200,000 or \$2,000,000-plus, call today to start your journey to the BGreen home of your dreams.

.....

Birch Co

(918) 764-8869

thebirchco.com
angus@thebirchco.com

At The Birch Co., we build custom homes in Tulsa with care, intention, and a personal touch, inviting each client to discover the art of living. Since 2017, we’ve completed 250-plus homes, working closely with each family to create timeless, functional spaces that truly reflect who they are.

.....

Black Gold Builders LLC

(918) 585-5900

mdaniels@blackgoldgroup.com
www.blackgoldgroup.com

Black Gold Builders is a Tulsa-based real estate builder and development company with 30+ years experience. Founded by Kevin Jordan, and today led by both Kevin and Jonathan Wedel, Black Gold Builders has overseen both residential and commercial real estate projects all throughout Eastern Oklahoma from Bixby to Skiatook and Grand Lake to Downtown Tulsa and Jenks. Black Gold Builders has developed eight subdivisions, built over 500 apartments, and 700-800 homes over the years.

.....

Butler Homes LLC

(918) 344-6808

www.butlerhomesllc.com
contactus@butlerhomesllc.com

Founded in the year 2000, Butler Homes has earned an impeccable reputation for building high-quality homes in the greater Tulsa area for over two decades. With a strong commitment to craftsmanship and customer satisfaction, Butler Homes specializes in creating semi-custom homes, on your own lot or in one of our communities. As one of Tulsa’s most award-winning builders, Butler Homes designs homes that are not only beautiful and functional but built to last. #BeyondtheBuild

.....

Capital Homes

(918) 201-1915
www.capitalhomes.com
info@capitalhomes.com

Since 1987, Capital Homes has been building quality homes rooted in craftsmanship, integrity, and thoughtful design. Guided by a commitment to doing things the right way, our team creates energy-efficient, HERS-Certified homes in family-focused communities. From your first visit, to the day you receive your keys, we prioritize exceptional service, lasting quality, and building trust every step of the way.

Castlerock Builders

(918) 951-6186
www.castlerockbuilders.net
castlerock1@cox.net

Steve Wright has been building quality homes for satisfied customers for over 26 years in Tulsa and the surrounding areas. Professional hands-on construction and customer service help the customer to design and build the home of their dreams. They will build on your lot, land, or any of the numerous developments we are currently building in. Choose from existing floor plans or have us design one for you. All of their homes are designed and built with the highest-quality materials, offering value and special details to make your home stand apart from the others.

CGT Builders, LLC

(469) 446-0731
www.cgtbuilders.com
walkerts1@verizon.net

CGT Builders is a premier residential construction firm specializing in high-end custom homes. We deliver exceptional craftsmanship, refined design, and seamless project execution. With a commitment to quality, detail, and client satisfaction, we bring distinctive visions to life with precision and integrity.

CHASE RYAN HOMES, LLC

(918) 760-5679
www.chaseryanhomes.com
crhomes@cox.net

Award-Winning Chase Ryan Homes is a family-owned and -operated business, building single-family residences in the Tulsa Metro and surrounding areas. With 40-plus years of experience in the building industry, Chase Ryan Homes demands the highest standards and quality on every home it builds. It specializes in homes from \$500,000 to over \$3,000,000.

Cobblestone Homes, Inc.

(918) 640-7252
www.cobblestonehomesok.com
cobblestonehomes@cox.net

Cobblestone Homes is a company that builds quality, energy-efficient, and personalized homes for its customers. Founded in 1976 by Rodger Tucker, a veteran home builder, Cobblestone Homes has a reputation for excellence and customer satisfaction. Our team oversees every aspect of the construction process, from the initial design to the final touches, ensuring that each home meets the highest standards and the customer's expectations. We are committed to environmental sustainability, as every home is built to meet the Energy Star® criteria, which can reduce energy consumption by 50–60% compared to standard homes. Cobblestone Homes will meet you where you are, building all across Tulsa and surrounding communities. If you are looking for a new home that is beautiful, efficient, and customized to your needs, contact Cobblestone Homes today at (918) 640-7252.

Concept Builders, Inc.

(918) 743-4584
https://concept-builders.com
robertkleven@concept-builders.com

Concept Builders is a Tulsa-based, family-owned home builder founded in 1977. We specialize in thoughtfully designed homes, blending quality construction, energy efficiency, and flexible customization. From curated floor plans to fully custom builds, our experienced team delivers lasting value, clear communication, and homes tailored to how people truly live well.

Cozort Custom Homes

(918) 202-3675
www.cozortcustomhomes.com
acozort@mcgrawrealtors.com

Cozort Custom Homes is a third-generation builder rooted in a family legacy of over 70 years crafting custom homes in the greater Tulsa area. Led by Matt Cozort, each home is thoughtfully built through a hands-on, highly personalized process—where timeless design, intentional detail, and true craftsmanship come together. The result is a home that not only reflects how you live, but stands the test of time.

DMG Master Builders LLC

(918) 630-3423
www.labellahomesok.com
puma74011@yahoo.com

DMG Master Builders helps you create a home that's a true reflection of who you are. With a combined 50 years of experience creating masterpieces in prime real estate areas, we are dedicated to designing and building one-of-a-kind luxury homes to fulfill the specific dreams of each customer.

Dodson Building Group, Inc.

(918) 520-4814

www.dodsonbuilding.com
schultzbuilding@gmail.com

For more than 45 years, Dodson Building Group has built a solid reputation by providing exceptional homes at an outstanding value. They are dedicated to making your building experience as easy as possible by offering customers a home-buying or custom homebuilding experience that is second to none. This is achieved by establishing a client-builder relationship that extends years beyond the construction process.

.....

Dwell Homes

(918) 409-2282

www.dwellhomesok.com
skylar@dwellhomesok.com

Dwell Homes exists to create design-driven homes through a curated and thoughtful building process. We work to guide each client from vision to completion with clarity and intention. It is our goal to create a great home AND a great building process!

.....

Envision Homes LLC

(918) 260-7841

www.envisionhomestulsa.com
mike.parks1@cox.net

Builder Mike Parks has been in the real estate industry for over 30 years. Twenty-five years ago, he branched out to new construction building. He has built hundreds of homes all over Tulsa and surrounding areas. Mike manages and supervises each new home project from start to finish to ensure the highest quality and standards in each home. You can choose from one of our plans and customize it to your needs or bring your own floor plan for customization. Whether a first-time home buyer, a growing family, empty nesters or you have land of your own, let Envision Homes guide you through building your dream home.

.....

Epic Custom Homes

(918) 906-3910

www.epictulsa.com
rob@epictulsa.com

EPIC Custom Homes, the proud builder selected for the "Tulsa St. Jude Dream Home" is known for building truly beautiful, technically sound, fully custom homes. We implement an elevated standard in our building practices, providing higher-grade materials and energy savings in every project. While we pride ourselves on our technical skills, our superior design is regularly recognized, as we are consistent winners in the Greater Tulsa Area Parade of Homes.

What truly separates us from other builders is our in-house design support. We are one of just a few builders in the Tulsa area who offer full construction documents in-house and provide 3D renderings. Our selections team supports the client throughout the building process by scheduling and attending vendor meetings and site visits, resulting in an excellent client experience and better cost containment. Building with EPIC ensures that our homeowners move into a truly custom home as a result of a collaborative design experience, with the peace of mind of unmatched structural integrity.

.....

Farabough Homes, LLC

(918) 402-3447

www.faraboughhomes.com
faraboughhomes@gmail.com

Farabough Homes was founded by Ryan Farabough with his commitment to delivering personal attention to every project, resulting in the high quality that his homes and remodels have been known for. Farabough Homes has been crafting custom luxury homes for over 20 years. Never one to settle, Ryan has channeled his education and experience into creating High Performance Homes—homes so innovative that they are more efficient, durable, and comfortable to live in. Nationally recognized by Professional Builder magazine, Ryan is also recognized as both a Graduate Master Builder and a Master Certified Green Professional by the NAHB. Farabough Homes offers every level of service from custom design/build projects to additions and remodels to your existing home. We build anywhere in and around the greater Tulsa area, in neighborhoods, or on land as well.

.....

GEM Contractors, Inc.

(918) 260-9798

www.gemcontractorsinc.com
garysoderstrom@gmail.com

Gary Soderstrom is a native Tulsan, Tulsa University graduate, and founder of GEM Contractors. Many past clients are satisfied homeowners who return to have a new home built or to renovate their home to accommodate their changing lifestyles. Choosing GEM Contractors utilizes his expertise, wisdom, and design resources.

.....

Glenwood Homes

(918) 938-6986

www.glenwoodhomesok.com
sales@glenwoodhomesok.com

Since 2009, Glenwood Homes has been building safe, energy-efficient homes in Tulsa, with tornado safety features included as standard. They are committed to offering modern amenities, innovative designs, and affordable pricing for homeowners, ensuring a secure and comfortable living environment.

.....

Hoffman Homes

(918) 312-3467
www.hoffmancustomhomes.com
chanin@hoffmancustomhomes.com
Hoffman Homes specializes in Luxury Downsizing™—a refined approach to custom homebuilding designed exclusively for the active adult lifestyle. Our communities are thoughtfully located, gated for peace of mind, and feature single-story homes with open, elegant floor plans and resort-style amenities. Each homeowner collaborates directly with our award-winning design team to craft a truly custom residence that reflects their personal taste and lifestyle. Experience the freedom, comfort, and quality you’ve earned—come live the lifestyle you’ve been waiting for!

J. Davis Homes

(918) 521-7768
www.mytulsahomebuilder.com
traci@jdavishomesok.com
Founded in 2015 by husband-and-wife team Jason and Amber Davis, J. Davis Homes is a family-owned custom builder serving the Tulsa area. We design and build one-of-a-kind homes with hands-on involvement, transparent budgeting, and craftsmanship focused on lasting quality and client relationships from concept to completion every step counts together. The “Davis Difference.”

Juniper Home Group

(918) 798-2544
www.jhghomes.com
trevor@jhghomes.com
With a passion for craftsmanship and a commitment to excellence, Trevor Taylor founded Juniper Home Group to redefine the home building experience. At the heart of Juniper Home Group is a dedication to quality and sustainability. We believe in creating spaces that meet the needs of modern living.

Kent Construction

(918) 630-3423
www.kentconstructionok.com
tag@puma-tag.com
Larry Battaglia founded Kent Construction in 1999. Before he found Kent Construction, Larry was primarily focused on sales of building materials and metal products. With years of residential and commercial construction, joining Tulsa Development Group was a natural fit. His residential projects include spec homes, custom home projects, and significant remodels. With his experience in these areas, Larry has firsthand knowledge of what needs to be considered when designing a development in the Greater Tulsa area. After over 25 years, Larry has proven himself to be one of the top builders in the area, with successful developments over the greater Tulsa area and growing by the day. Larry has diligently sought to maintain a reputation for honesty and integrity, a commitment to quality, customer service and a seamless working relationships.

La Bella Custom Homes

(918) 809-4372
www.labellahomesok.com
n.puma@me.com
La Bella Homes President, Julius Puma, is known for his ingenuity and honesty and, yes, his beautiful homes. He is a second-generation president of the company and a longtime Tulsa Home Builders Association member. He has designed and constructed more than 250 custom-classic homes in the Tulsa area, many of which are located in South Tulsa’s most prestigious neighborhoods.

Legacy Home Builders LLC

(918) 724-9143
not up at this time
patrickhuntleytulsa@gmail.com
Legacy Home Builders, building custom homes in the Tulsa & surrounding areas since 2007. Building your dream home for you & your family!

Lennar

(918) 261-9430
www.lennar.com
emily.konieczny@lennar.com
Our commitment to Quality, Value, and Integrity is the underlying foundation upon which Lennar was built, and these three fundamental principles still guide us in caring for our customers, associates, shareholders, and community.

Malibu Homes LLC

(918) 829-4554
www.malibuhomesok.com
malibuhomesok@gmail.com
At Malibu Homes, we believe that every home should be a masterpiece. Our company was co-founded by a veteran home inspector with over 20 years of experience in the field. Having witnessed the spectrum of building practices, from the exemplary to the flawed, our founders were inspired to create a company that embodies the pinnacle of residential construction with attention and care toward our clients’ investments. We are committed to the art and science of building, utilizing only the most proper and effective techniques to create homes that are not only beautiful but also efficient, durable, and sustainable. Join us on the journey of creating your dream home, where every detail (seen and unseen) tells a story of quality and excellence.

Mathis Homes

(918) 724-7577

www.mathis-homes-ok.com
mathishomesok@gmail.com

Mathis Homes is a family-owned, faith-based home builder proudly serving Coweta, Wagoner County, and the greater Tulsa area. Founded in 2021, our hands-on experience in new construction goes back to 2016—an experience that continues to shape how we build today.

Mike Harrison Custom Homes

Mike Harrison

11619 South Kingston Avenue
Tulsa, OK 74137

(918) 430-5241

www.mikeharrisoncustomhomes.com
mmbuilder@att.net

With 50 years of experience, Mike Harrison Custom Homes builds \$1,000,000+ homes across the Tulsa area, from Grand Lake to Owasso, South Tulsa, and Broken Arrow. Our collaborative design-build approach ensures each home reflects your lifestyle, tastes, vision, and delivering exceptional quality. Family-owned. We build on your land or ours.

New Age Homes

(918) 576-4342

www.newagehomes.net
jared@newagehomes.net

With 30 years of hands-on construction experience, I have built a career grounded in craftsmanship, reliability, and deep industry knowledge. Over the past decade, I've specialized in new-construction residential homes, managing projects from the ground up and ensuring every build meets the highest standards of quality and precision.

My background spans all phases of construction, including planning, framing, finishing, and coordinating with subcontractors and inspectors. I'm known for my strong work ethic, problem-solving skills, and commitment to delivering homes that are built to last.

Odell Properties, LLC

(918) 845-1197

www.odellpropertiesok.com
david@odellpropertiesok.com

David Odell is a 2nd generation builder with a lifetime immersed in the craft, dedicated to building quality homes with a hands-on, relational approach. Odell Properties is committed to thoughtful design, attention to detail, and lasting relationships, guiding each client personally from vision to completion with integrity, care, and craftsmanship.

Old School Construction

(417) 527-3986

www.oldschoolconstruction.com
mark.hill@kw.com

At Old School Construction, we believe that true quality takes time, focus, and an uncompromising eye for detail. Our business is run by family, for families. We understand that your home is your greatest investment. We treat it with the same care and respect as if it were our own. We combine traditional craftsmanship with modern durability. We know that the construction process can be overwhelming; that's why we prioritize transparency, integrity, and communication. Our goal is to make the building experience as solid and reliable as the homes we produce. From the first handshake to the final walkthrough, you can expect a partner who listens, a team that shows up, and a finished product that exceeds expectations.

Oklahoma Royal Homes

Tim Martin

23000 South Highway 88, Suite #103
Claremore, OK 74019

(918) 693-6084

www.oklahomaroyalhomes.com
tmartin@oklahomaroyalhomes.com

Oklahoma Royal Homes is a builder of new custom homes in Northeast Oklahoma. Our build area includes Tulsa and the surrounding areas and extends to all of Grand Lake. Our services include site and plan development, financing and construction of new high efficiency custom homes. Established in 1996, Oklahoma Royal Homes has developed a reputation for delivering quality custom homes that meet or exceed our customers expectations.

Paradigm Properties

(918) 261-1774

www.paradigmoklahoma.com
info@hoppergroup.com

Paradigm Properties is an Oklahoma-based homebuilder focused on quality craftsmanship, smart design, and a smooth building experience. We create beautiful, functional homes with attention to detail, honest communication, and a commitment to delivering lasting value for families in our communities.

Perfection Homes

(918) 810-0318
www.facebook.com/perfectionhomes
perfection.wda@gmail.com
Perfection Homes, the 2008 Builder of the Year, offers personalized construction from concept to completion with unique designs and quality workmanship, creating custom, energy-efficient homes and remodeling projects that represent the essence of elegant, upscale living, from \$300,000 to over \$4,000,000. Perfection Homes has received many prestigious awards over the years for its uncompromising quality and craftsmanship, superior details, and personal service. Wayne is a member of the Home Builders Association Board of Directors. Wayne served as the 2005 President of the Association. Call Wayne at (918) 810-0318 or contact him at perfection.wda@gmail.com.

Schuber Mitchell Homes

(417) 626-7000
www.schubermitchell.com
info@schubermitchell.com
Founded in the aftermath of the 2011 Joplin tornado, Schuber Mitchell Homes grew from a desire to serve families in need. Built on principles of integrity, stewardship, and generosity, we are committed to creating quality homes and meaningful experiences for every homeowner.

Scissortail Builders

(918) 521-2328
www.scissortailbuilders.com
scissortailbuilders@gmail.com
Beau Brewer, owner of Scissortail Builders, is a second-generation home builder with a passion for crafting exceptional, high-end residences in South Tulsa and the surrounding areas. Known for a hands-on approach, Brewer partners with elite craftsmen to deliver uncompromising quality, refined design, and superior workmanship—inside and out. Scissortail Builders specializes in top-tier custom homes ranging from \$500,000 to over \$1 million.

Simmons Homes, LLC

(918) 205-0535
www.simmonshomes.com
info@simmonshomes.com
Simmons Homes is a locally owned, family-run builder with over 32 years of experience delivering proven quality at attainable price points across the Tulsa area. We focus on building well-crafted homes in desirable locations, continually refining our designs and options to offer lasting value for every family and stage of life.

SixthDay Homes

(918) 830-0385
www.sixthdayhomes.com
david@sixthdayproperties.com
We design spaces people love to be in ... for us, that includes every space of a home, both inside and out.

Sol Valley Fine Homebuilders

(918) 640-5091
www.solvalleyco.com
build@solvalleyco.com
Sol Valley is a builder of fine, luxury homes in the Tulsa metro and surrounding areas. We focus on creating elevated, timeless homes that will stand the test of time in both design and function, showcasing the highest quality and attention to detail.

StreamLand Homes

(918) 971-9696
www.streamlandhomes.com
info@streamlandhomes.com
Established in 2018, StreamLand Homes is a custom home builder serving the greater Tulsa metro area, creating thoughtfully designed residences that emphasize architectural character with everyday livability. Each home is carefully planned with intentional layouts, refined detailing, and a focus on how spaces are experienced.

The Brumble Group

(918) 299-0042
www.thebrumblegroup.com
clintb@thebrumblegroup.com
With over 45 years of building experience in the Tulsa area and now in our third generation, we bring a legacy of excellence to every custom home and remodeling project we take on. Our portfolio ranges from \$500,000 to over \$3,000,000, reflecting our commitment to quality, craftsmanship, and tailored design. We proudly serve Tulsa and the surrounding communities, including Grand Lake.

True North Homes LLC

(918) 640-7252
www.tnhok.com
gant@tnhok.com
True North Homes is a luxury custom home building company founded by Gant Hinkle in 2018. What began as a small endeavor focused on new builds in midtown, the company evolved into a full-service homebuilding company delivering both custom and spec homes across Tulsa, Oklahoma City, and Grand Lake. With over 20 years of combined home-building experience, the True North Homes leadership team brings unmatched craftsmanship, design expertise, and genuine passion to every project. Whether the client has a clear vision or needs guidance along the way, the building process embodies collaboration and turning ideas into exceptional, livable spaces that reflect the client's personality and lifestyle. Completing around 40 to 50 projects annually, True North Homes is supported by a seasoned and growing team of superintendents, designers, and specialists dedicated to excellence at every stage—from concept to completion. The commitment to partnership and precision creates an efficient building experience that culminates in the client's personalized dream home.

Vision Homes of Oklahoma

(918) 231-2815

www.buildwithvisionhomes.com

visionhomesoklahoma@gmail.com

Vision Homes was founded in 2019 by Tulsa native Kyle Clavin, a husband and father of four who believes a home should be built with intention.

After years of owning and operating rental properties, Clavin shifted his focus to building homes the right way: thoughtfully designed, well-executed, and tailored to the families who live in them.

At Vision Homes, every project starts with a clear understanding of how you live. From layout to finishes, each decision is made to balance form, function, and long-term value. They prioritize smart design, efficient use of space, and a level of craftsmanship that holds up over time.

This is a hands-on, partnership-driven process; working closely with each client from concept through completion—bringing clarity, discipline, and attention to detail at every step.

Whether it's your first home or your last, their goal is simple: build something that feels right the day you move in—and even better years later.



BISON MOVING
Tulsa's Leading Local Movers
10% OFF
OUR HOURLY RATE
COUPON MUST BE PRESENTED AT THE TIME OF THE MOVE.
918-800-4267 WWW.BISONMOVING.COM

At Juniper Home Group, we believe the best homes are born from great relationships. It all starts with a conversation—listening to your hopes, understanding your lifestyle, and appreciating your unique vision.

We are a local, dedicated team serving the greater Tulsa area. For us, building isn't just about structures; it's about crafting the backdrop for your life's biggest moments. We are passionate about our community and committed to the art of custom homebuilding, where quality and personal connection are never compromised.

www.jhghomes.com
trevor@jhghomes.com
918-798-2544

TWILIGHT TOURS



6 PM - 9 PM

MONDAY, JUNE 15

PINE RIDGE 

TUESDAY, JUNE 16


FOREST RIDGE

THURSDAY, JUNE 18

the Reserve
AT SOUTHERN WOODS

FRIDAY, JUNE 19

Stone Canyon
Rediscover Nature. Redefine Home.

Sponsored by:



HARDSCAPE MATERIALS

Ten Acres of pure Landscape Possibilities.

Stone. Gravel. Garden. Pond. Fish.

Started in 1993 with a truck and a wheelbarrow, Hardscape Materials is now Oklahoma's premier stone and outdoor living headquarters. From boulders and building stone to water features, ponds, plants, and décor, this is where great outdoor landscapes begin.



Quality Hardscape Materials

- ✓ Exceptional Customer Service
- ✓ Locally Owned & Easy to Access
- ✓ Certified Scales for Accurate Weight
- ✓ Massive Stone Sample & Display Panels
- ✓ Artificial On-Site Turf Options
- ✓ Same Day Delivery For Home Builders
- ✓ Over 10 Acres of IN-Stock Materials!

Built for Builders, Easy for Home Owners.

Hardscape Materials delivers accuracy, efficiency, and convenience—all in one place.

Everything Outside. One Stop, One Scale.

From a massive selection of stone and gravel to our on-site certified scale, Hardscape Materials makes it easy to source, load, and accurately measure materials without running all over town.

 HardscapeMaterials.com



Pump Shack



Garden Center



Outdoor Living




PARADE
of HOMES

 918.369.1170

 11610 S. Memorial Drive, Bixby, OK 74008



TULSA
MOSQUITO
& PEST CONTROL

- ⦿ MOSQUITO BACKPACK BARRIER SPRAY
- ⦿ GENERAL PEST PESTCONTROL
- ⦿ MOSQUITO MISTING SYSTEMS



**Over
20 Years
Experience**

918.960.0777

tulsamosquitocontrol.com



Screen Dreams



25 years in business.
Experience matters.

There when you need them, gone when you don't! Phantom Screens let you enjoy the fresh air without annoying bites or buzzes. When they are not in use, they retract out of sight, never interrupting your lifestyle or your view.

Perfect for doors, windows, oversized wall systems and large openings, Phantom Screens provide insect protection, added privacy, shade from the sun and more.



Custom-made and professionally installed so all your screen dreams can come true.



Contact Heidi today at
918-249-1756
Heidi@tulsaareascreen.com

Visit us: tulsaareascreen.com

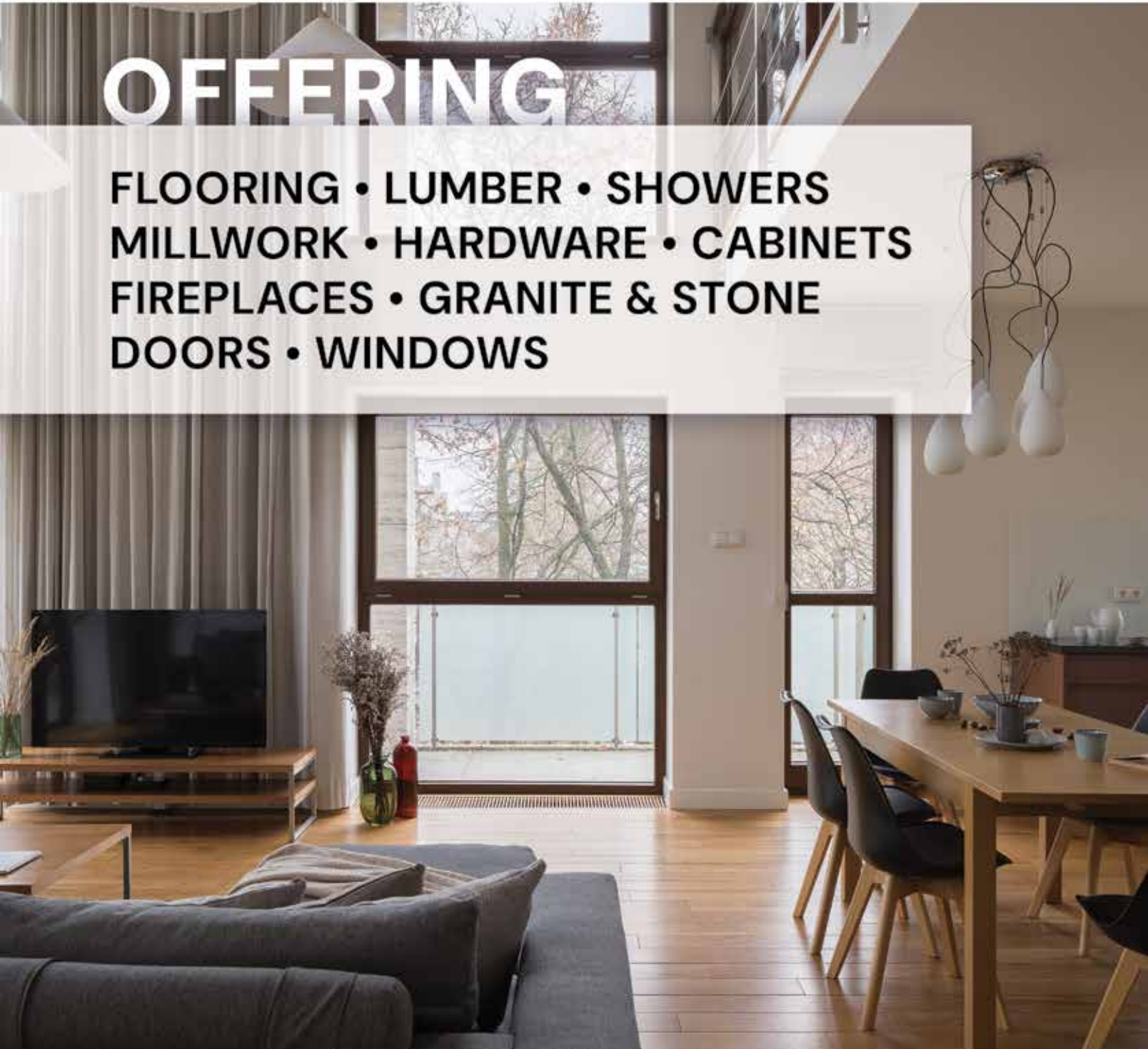
Follow us:  

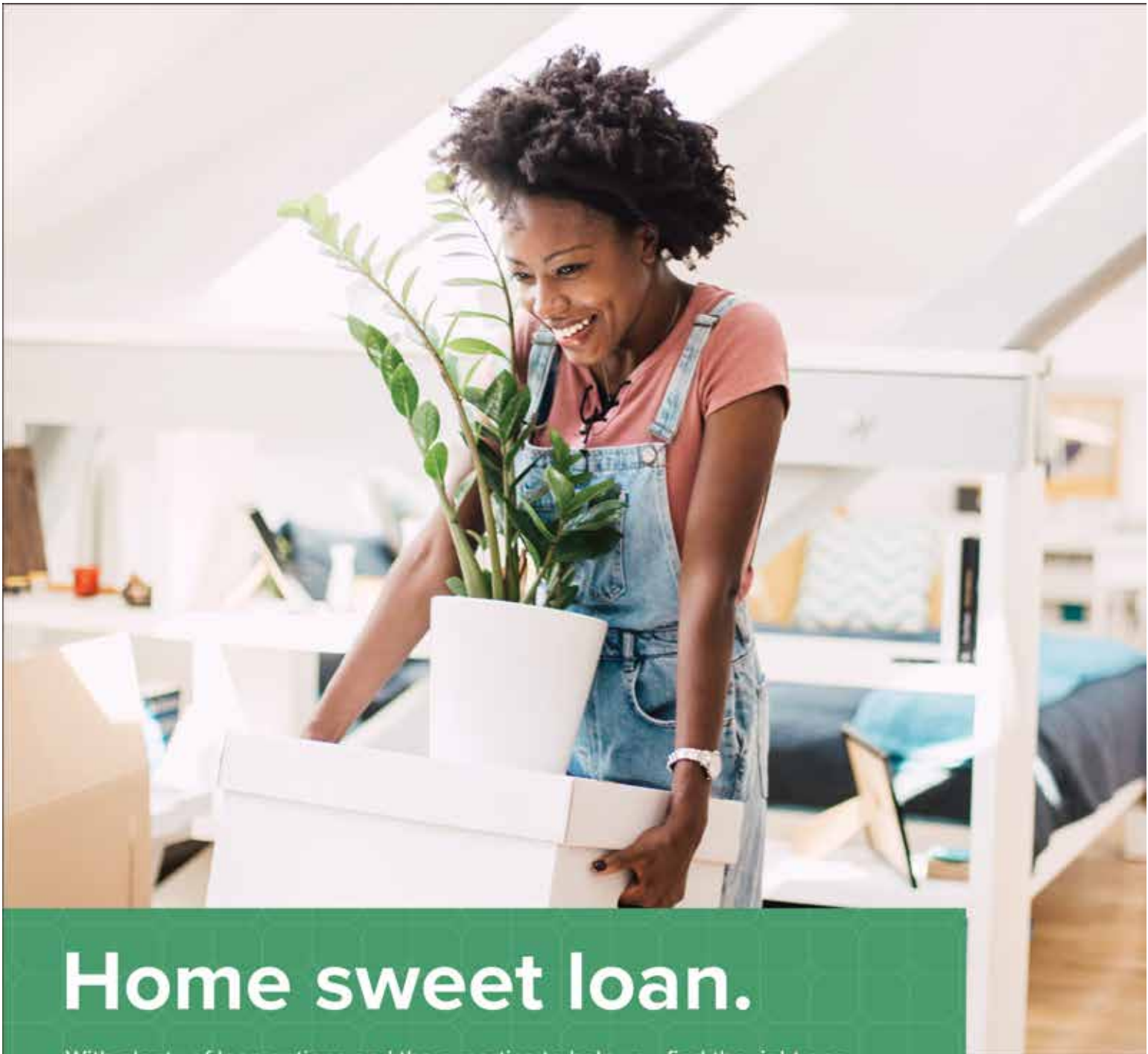


Proud to sponsor the Tulsa HBA
www.millcreekkarpet.com | www.millcreeklumber.com

OFFERING

**FLOORING • LUMBER • SHOWERS
MILLWORK • HARDWARE • CABINETS
FIREPLACES • GRANITE & STONE
DOORS • WINDOWS**





Home sweet loan.

With plenty of loan options and the expertise to help you find the right one, we're the perfect choice for your home loan. As a full-service nationwide lender, we retain the servicing for more than 95% of the home loans we originate. We stick with you throughout the life of your loan.

Stop by an Arvest branch or visit us online to connect with a lender today.

arvest.com/homeloan

ARVEST®

Mortgage

Member FDIC  Equal Housing Lender

Loans subject to credit approval. We currently lend in all states except Delaware, Rhode Island, Maryland, New Hampshire and New York.